

HOK_44 – Mikonui River (0.4807 ha)

Protected Area(s)	Area (ha)	NaPALIS #	# of Primary Parcels
Conservation Area - Mikonui River - SH6	0.4807	2805524	1

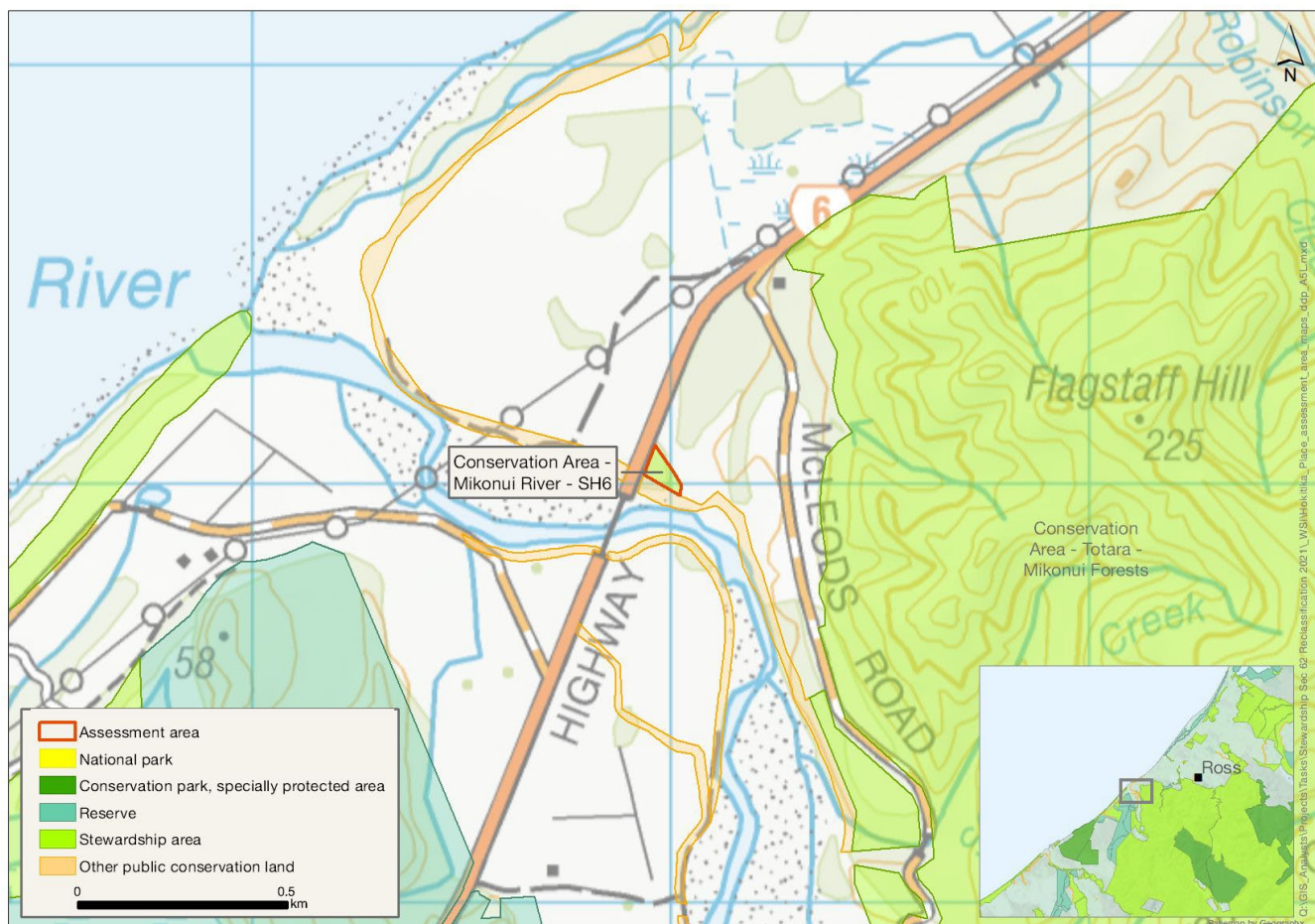
Location

This assessment area is adjacent to the east side of SH6 and on the true right (i.e. north) side of Mikonui River, c. 5 km southeast of Ross.

Brief Description

The assessment area is a small, lowland area of alluvial flat that is largely pasture. There are no records of terrestrial threatened species or threatened habitats here. There are no tracks or facilities, and there is currently no recreation use. This area contains a nohoanga site, managed in accordance with the Ngāi Tahu Claims Settlement Act 1998. No heritage values, or permissions, are recorded.

Map



Ngāi Tahu Values and Interests

Mo tātou, a, mo ka uri, a muri ake nei – for us and our children after us

There is a deep connection between Ngāi Tahu and all of the whenua in the Ngāi Tahu takiwā. A section 4 Conservation Act and Te Tiriti principles perspective is required, and it may be that areas of land are significant to Ngāi Tahu from that broader perspective. To avoid doubt, nothing in the proposed classification affects, limits or derogates from the rangatiratanga of Ngāi Tahu over its takiwā, including in relation to freshwater; and/or any other rights or interests Ngāi Tahu may have.

This Conservation Area contains a nohoanga site. This site is managed in accordance with the Ngāi Tahu Claims Settlement Act 1998, ensuring the protection of significant Ngāi Tahu values. The West Coast Te Tai o Poutini Conservation Management Strategy notes the nohoanga site.

Nohoanga are entitlements to occupy, temporarily and exclusively, an area of lakeshore or riverbank for the purposes of lawful fishing and the gathering of other natural resources. The nohoanga may be used for up to 210 days each year between mid-August and the end of April.

Ecological Values

Representativeness

This very small site is mainly in pasture. It includes 40 m of a creek near the mouth of Mikonui River. No freshwater values are immediately present. It may be part of the Mikonui River floodplain. The area is on the east side of and adjoins SH6. The area has low representativeness of the Hokitika Ecological District.

Diversity and pattern

The assessment area is flat land that contains two level 4 land environment units, which is considered of modest environmental diversity. It contains about 40 m of creek bed and its associated riparian vegetation, but is largely pasture.

Rarity and distinctiveness

There are no records of terrestrial threatened species or threatened habitats at this site.

Ecological context

The site is very small, lowland alluvial flats located on the true right (i.e., north) side of SH6. It is c. 1 km from the coast and is at an altitude of less than 20 m above sea level. It adjoins a marginal strip along Mikonui River, which links it with the extensive Totara – Mikonui Forest Conservation Area (HOK_43). No freshwater values are immediately present.

Recreation Values

Setting

This area is in a Backcountry-remote zone. There are no tracks or facilities in the area.

Visitor type and activities typically undertaken

Currently no recreation use of the area.

Access

Access from SH6, Mikonui.

Heritage Values

Historical overview

No historic sites or heritage values recorded

Permissions Summary

N/A

Map (aerial photo)

