

## MAW\_46 – Moana (82.87 ha)

Protected Area(s)	Area (ha)	NaPALIS #	# of Primary Parcels
Conservation Area - Moana	82.87	2806537	2

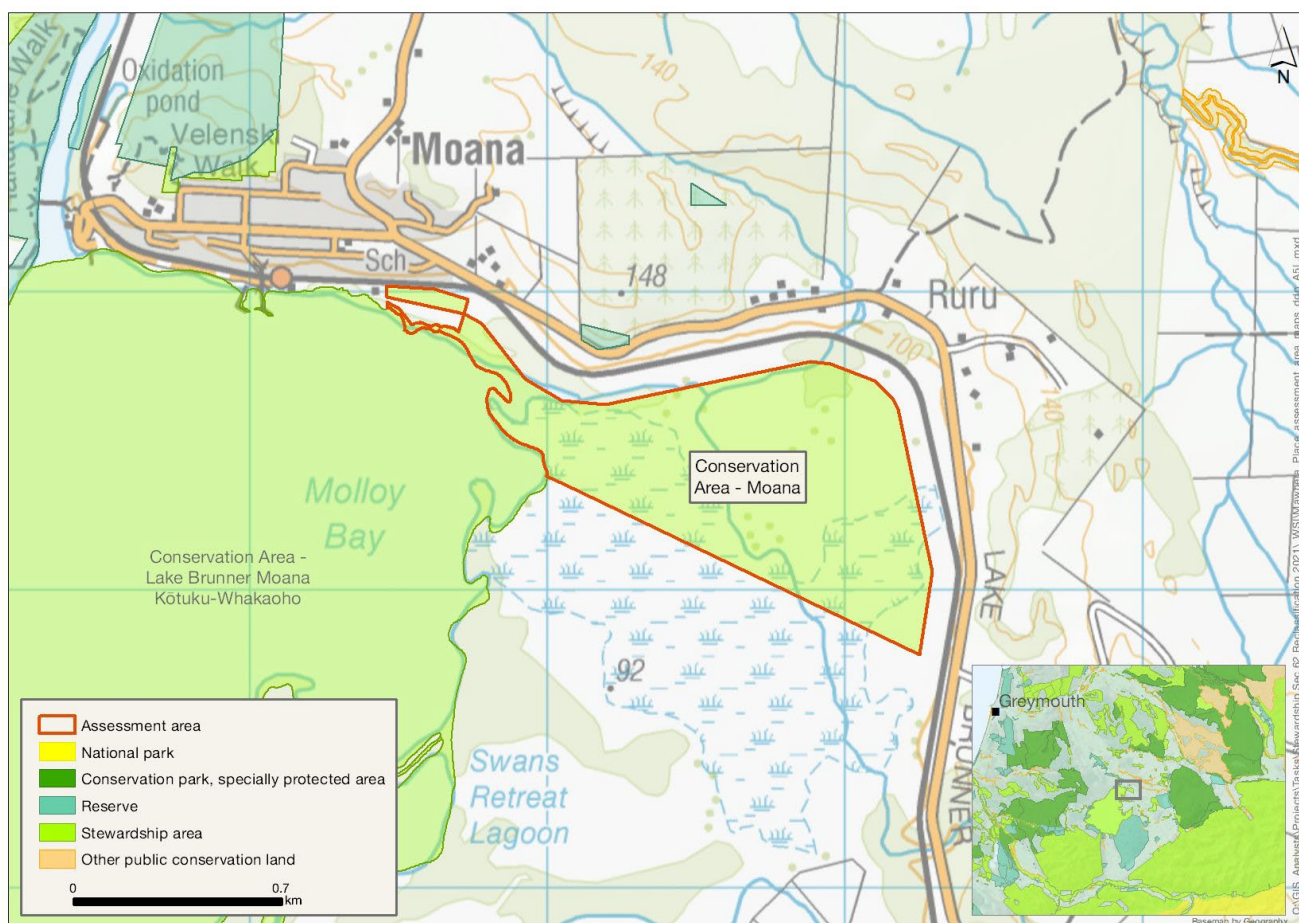
### Location

On the north-eastern end of Lake Brunner/Moana Kōtuku-Whakaoho, east of Moana township.

### Brief Description

A large area of wetland especially important for bittern. It contains swamp, bog, and pākihi wetland types that appear to be in a high state of naturalness. They are part of the Lake Brunner/Moana Kōtuku-Whakaoho bed and are listed as either Schedule 1 or Schedule 2 wetlands in the Regional Plan (Lake Brunner, Te Kinga (Ruru) BRUP006). This area provides some protection to the lake edge. It gets flooded at high lake water levels and provides an excellent buffer for the lake. Willows that used to be present in the area have been managed to enable kahikatea and other native species adapted to the flooded regime to become dominant. There are no tracks, facilities, permissions or recreational use.

### Map



## Ngāi Tahu Values and Interests

*Mo tātou, a, mo ka uri, a muri ake nei – for us and our children after us*

From the preliminary desk top assessments, there do not appear to be any site specific Ngāi Tahu values identified. However, there is a deep connection between Ngāi Tahu and all of the whenua in the Ngāi Tahu takiwā, and the absence of site specific values in the preliminary analysis does not detract from that connection, nor does it confirm that site specific values are not present. Further, a section 4 Conservation Act and Te Tiriti principles perspective is required as well, and it may be that areas of land are significant to Ngāi Tahu from that broader perspective. To avoid doubt, nothing in the proposed classification affects, limits or derogates from the rangatiratanga of Ngāi Tahu over its takiwā, including in relation to freshwater; and/or any other rights or interests Ngāi Tahu may have.

## Ecological Values

### Representativeness

The parcel contains swamp, bog, and pākihi wetland types that appear to be in a high state of naturalness. They are part of the Lake Brunner/Moana Kōtuku-Whakaoho bed and are listed as either Schedule 1 or Schedule 2 wetlands in the Regional Plan (Lake Brunner, Te Kinga (Ruru) BRUP006). The watercourse that flows through this parcel has high predicted water quality.

### Diversity and pattern

This parcel contains a large wetland with associated drainage channels, adjoining the lake. Known as the Ruru wetland, it is of high value. It has a high bird diversity including bittern, coots, NZ scaup (black teal, *Aythya novaeseelandiae*), swans and herons.

### Rarity and distinctiveness

Australasian bittern (matuku hūrepo, *Botaurus poiciloptilus*) (Nationally Critical) have been recorded here – this is one of the best potential sites for bittern in the Grey District. The area appears to be in a natural state, with some areas further south converted to pasture. It contains an acutely threatened land environment.

Longfin eel (*Anguilla dieffenbachii*) (At Risk: Declining) is here. Confidence of the stated assessment of species significance and values is not very high, as the majority of the recorded freshwater fishery values only identify down to genus, e.g., *Gobiomorphus* sp (bullies), *Anguilla* sp (eels).

### Ecological context

This parcel provides some protection to the edge of the lake. Its values lie in its wetlands and associated freshwater elements. This area gets flooded at high lake water levels and provides an excellent buffer for the lake.

A programme of willow control continues within the wetland and has been successful at reducing the number and size of the trees and keeping on top of regrowth. This enables enable kahikatea (*Dacrycarpus dacrydioides*) and other native species adapted to the flooded regime to become dominant.

## Recreation Values

### Setting

This area is between the eastern shore of Lake Brunner/Moana Kōtuku-Whakaoho and the railway line. This area is in a Backcountry-remote zone. There are no tracks or facilities in this area.

### Visitor type and activities typically undertaken

The area is likely to receive little recreation use.

## Access

The area is not easy to access due to the area of wetland extending from the lake to railway.

## Heritage Values

Historical overview, Sites recorded and Heritage values

None recorded.

## Permissions summary

None recorded.

## Map (aerial photo)

