

TWP_12 – Duart Farm west Poerua (128.9181 ha)

Protected Area(s)	Area (ha)	NaPALIS #	# of Primary Parcels
Conservation Area – Duart Farm	128.9181	2805647	3

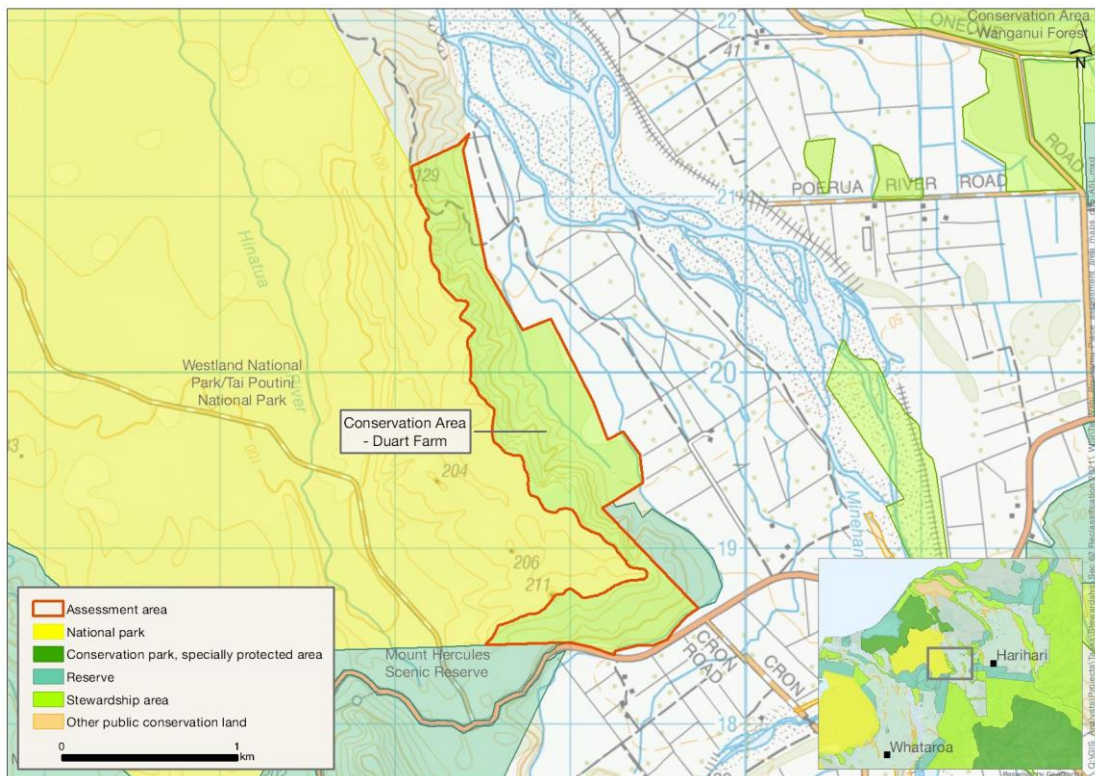
Location

On the true left of Poerua River, north of SH6.

Brief Description

An area of lowland forest on outwash flats and moraine adjacent to Westland Tai Poutini National Park and Mt Hercules Scenic Reserve. Given this location, it likely supports a range of native forest birds, lizards and invertebrate fauna. It is not known for any recreation use or historic value and has no tracks or facilities.

Map



Ngāi Tahu Values and Interests

Mo tātou, a, mo ka uri, a muri ake nei – for us and our children after us

From the preliminary desk top assessments, there do not appear to be any site specific Ngāi Tahu values identified. However, there is a deep connection between Ngāi Tahu and all of the whenua in the Ngāi Tahu takiwā, and the absence of site specific values in the preliminary analysis does not detract from that connection, nor does it confirm that site specific values are not present. Further, a section 4 Conservation Act and Te Tiriti principles perspective is required as well, and it may be that areas of land are significant to Ngāi Tahu from that broader perspective. To avoid doubt, nothing in the proposed classification affects, limits or derogates from the rangatiratanga of Ngāi Tahu over its takiwā, including in relation to freshwater; and/or any other rights or interests Ngāi Tahu may have.

Ecological Values

Representativeness

The area includes alluvial flats and hill slope within Harihari Ecological District. The area is fully forested by rimu (*Dacrydium cupressinum*), rātā (*Metrosideros robusta*), kamāhi (*Pterophylla racemosa*), Westland *Quintinia* trees and wheki (rough tree fern, *Dicksonia squarrosa*). Given that the area adjoins the large, intact Westland Tai Poutini National Park, it likely supports a range of native forest birds, lizards and invertebrate fauna. There is one small section of waterway on the assessment area, and no wetlands are present.

Diversity and pattern

The area has an ecological sequence from alluvial flats from 60–160 m above sea level. A stream flows along the toe slope through the area. The area contains 5 level 4 land environments. It likely supports a typical suite of native forest birds and invertebrate fauna.

The assessment area is not likely to support a diversity of freshwater ecosystems. The topographic map indicates one small stream to be present. There are no recorded species found at site, but lamprey (kanakana, *Geotria australis*), banded kōkopu (*Galaxias fasciatus*), shortjaw kōkopu (*Galaxias postvectis*) and giant kōkopu (*Galaxias argenteus*) are found nearby and would likely use this waterway.

Rarity and distinctiveness

Forest gecko (*Mokopirirakau granulatus*) (At Risk: Declining) are possibly present. The area is within mapped kea (*Nestor notabilis*) (Nationally Endangered) habitat. It is likely used by a suite of At Risk: Declining bird species known from the area; pipit (*Anthus novaeseelandiae*), kākārīki (yellow-crowned parakeet, *Cyanoramphus auriceps*) and robin (*Petroica*). Kārearea (New Zealand falcon, *Falco novaeseelandiae*) (Nationally Endangered) is also likely present. Long-tailed cuckoo (koekoeā, *Eudynamys taitensis*) (Naturally Uncommon) may also be present, as it has been recorded in nearby areas.

There is no evidence of rarity and distinctiveness from a freshwater perspective, but the environment may be able to support rare species.

Ecological context

A relatively large (129 ha) irregular polygon only 25 m at its narrowest but it adjoins Westland Tai Poutini National Park and Mt Hercules Scenic Reserve. It acts as a buffer between developed farmland and the Park.

Recreation Values

Setting

This area is in the Backcountry-remote zone. There are no tracks or facilities in this area.

Visitor type and activities typically undertaken

This area is likely to receive little recreation use.

Access

Access is possible via SH6, south of Poerua River.

Heritage Values

Sites recorded

None recorded.

Heritage values

No value statement possible.

Modifying factors

None recorded.

Permissions summary

None recorded.

Map (aerial photo)

