

MAW_51 – Hohonu River (60.55 ha)

Protected Area(s)	Area (ha)	NaPALIS #	# of Primary Parcels
Conservation Area - Hohonu River	60.55	2806542	1

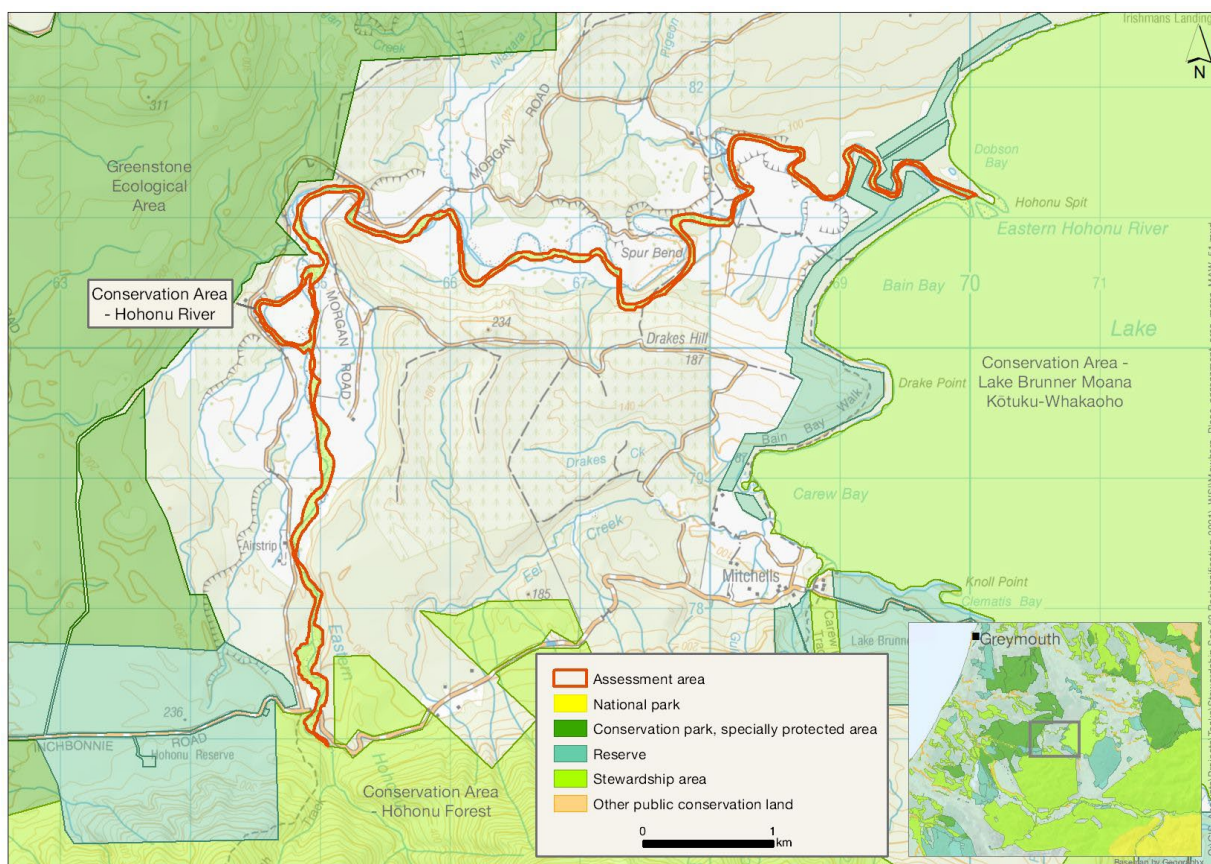
Location

A section of the Eastern Hohonu River, a major western tributary of Lake Brunner/Moana Kōtuku-Whakaoho, from the Kumara Inchbonnie Road to the lake.

Brief Description

A narrow conservation area roughly following the Eastern Hohonu River, one of three main tributaries of Lake Brunner/Moana Kōtuku-Whakaoho. It appears to follow what may at one stage have been the bed of the Eastern Hohonu River, which drains from Hōhonu Forest MAW_53 into the lake. It encompasses mainly farmland of rough pasture, areas of shrubland, with short lengths of gravel riverbed or river channel. Parts of the assessment area have been grazed but no licenses are in place. There are no tracks or facilities, but the area can be accessed by foot or boat. No historic interest.

Map



Ngāi Tahu Values and Interests

Mo tātou, a, mo ka uri, a muri ake nei – for us and our children after us

From the preliminary desk top assessments, there do not appear to be any site specific Ngāi Tahu values identified. However, there is a deep connection between Ngāi Tahu and all of the whenua in the Ngāi Tahu takiwā, and the absence of site specific values in the preliminary analysis does not detract from that connection, nor does it confirm that site specific values are not present. Further, a section 4 Conservation Act and Te Tiriti principles perspective is required as well, and it may be that areas of land are significant to Ngāi Tahu from that broader perspective. To avoid doubt, nothing in the proposed classification affects, limits or derogates from the rangatiratanga of Ngāi Tahu over its takiwā, including in relation to freshwater; and/or any other rights or interests Ngāi Tahu may have.

Ecological Values

Representativeness

This parcel is very narrow and appears to follow what may at one stage have been the bed of the Eastern Hohonu River, which drains from Hōhonu Forest MAW_53 into Lake Brunner/Moana Kōtuku-Whakaoho. For most of its length, the assessment area encompasses farmland of rough pasture, and areas of shrubland, with short lengths of gravel riverbed or river channel. The parcel includes the wetted margin of a tributary to the lake. High water quality is predicted.

Diversity and pattern

This parcel comprises mainly braided riverbed with some river flats, bluffs, and riparian margins. Freshwater fish records suggest a diversity of species. Giant kōkopu (*Galaxias argenteus*), common bully (*Gobiomorphus cotidianus*), kōaro (*Galaxias brevipinnis*), shortfin eel (*Anguilla australis*), longfin eel (*Anguilla dieffenbachii*) and kōura (freshwater crayfish, *Paranephrops planifrons*) have been recorded as present through both historic and recent records.

Rarity and distinctiveness

No terrestrial threatened species are recorded from the parcel. Braided riverbed would be a threatened habitat. Freshwater fish species include longfin eel, kōaro and giant kokopu (all At Risk: Declining). There have been reports of whio (Blue Duck, *Hymenolaimus malacorhynchos*) (Nationally Vulnerable) in the upper reaches of the river.

Ecological context

This parcel links MAW_53 to Lake Brunner/Moana Kōtuku-Whakaoho at its outlet, passing between sections of the Lake Brunner (Moana Kōtuku-Whakaoho) Scenic Reserve just before it flows into the lake, and is adjacent, but not joined to Greenstone Ecological Area and Hohonu Scenic Reserve. However, for most of the area, it is immediately surrounded by farmland except for approximately 1 km at the head of the parcel which is regenerating forest and shrubland.

The river is one of three main tributaries of the lake, and is likely to be a trout spawning river for the lake. The edges are heavily grazed (unlicensed), with only remnant stands of forest remaining.

Recreation Values

Setting

The area is in a Backcountry-remote zone. There are no tracks or facilities managed by the Department.

Visitor type and activities typically undertaken

Visitors by boat to the western shore of the lake can cross the area at the outlet of Hohonu River. Most of the area is likely to receive low levels of recreation use.

Access

Can be accessed on foot from Inchbonnie Road and by boat from the western shore of the lake.

Heritage Values

Historical overview, Sites recorded and Heritage values

None recorded.

Permissions summary

N/A

Map (aerial photo)

