

# INA\_46 – Warwick River (230.135 ha)

Protected Area(s)	Area (ha)	NaPALIS #	# of Primary Parcels
Conservation Area – Warwick River	149.7286	2807455	1
Conservation Area – Warwick River	80.4064	2807879	1

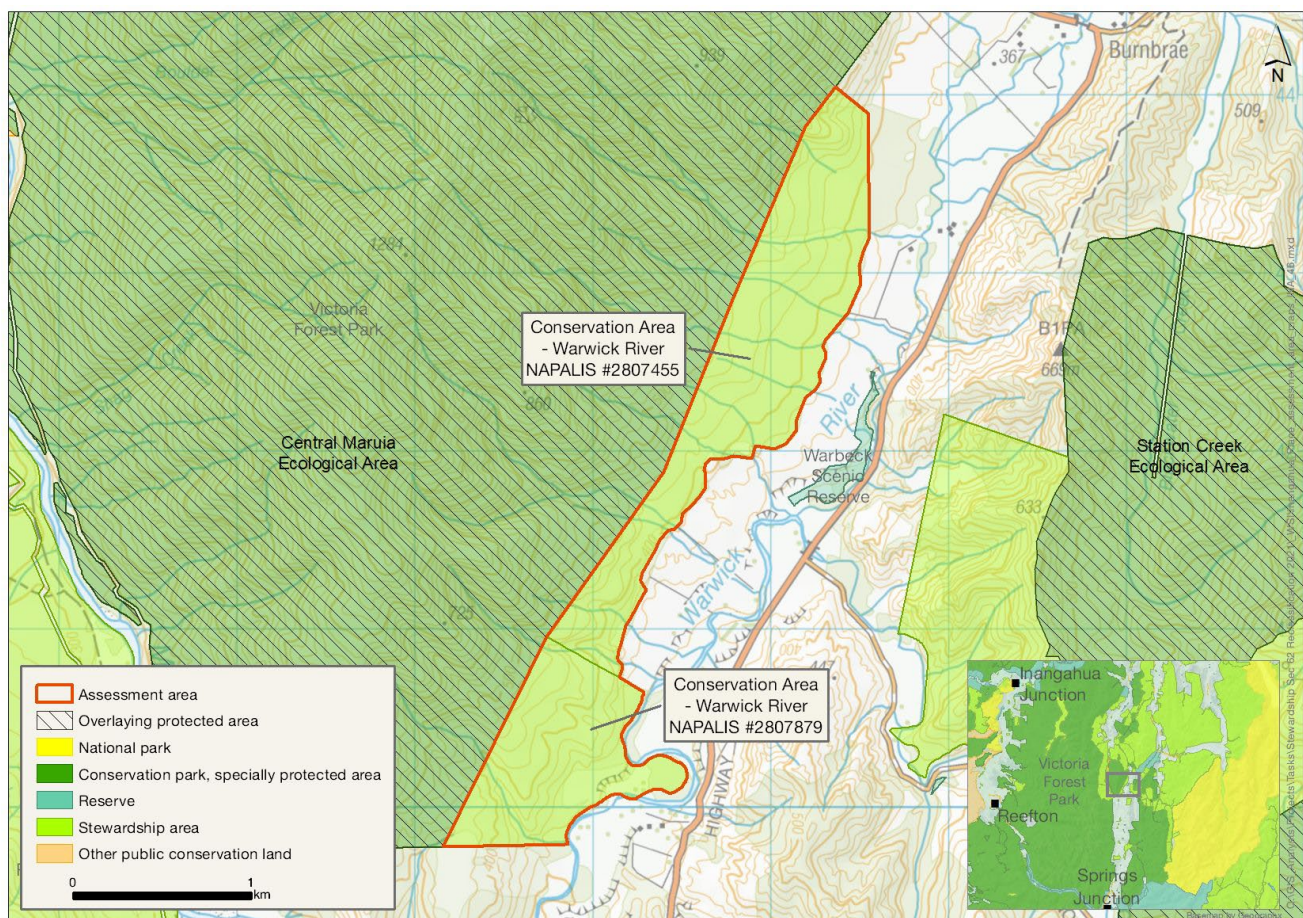
## Location

Western side of the Warwick River (tributary of Maruia River), southwest of Burnbrae in the Maruia valley.

## Brief Description

A moderate sized area consisting of the lower forested slopes on the eastern side of Warwick River. It encapsulates several tributaries of Warwick River, a tributary of Maruia River, and a part headwater of the larger Buller catchment. Sandwiched between land that has been cleared for farming and Victoria Forest Park (upslope). No freshwater species have been recorded in the area or upstream. Access is difficult, and there are no tracks or facilities. There may be occasional hunting. There is no historic interest, and no permissions in place.

## Map



## Ngāi Tahu Values and Interests

*Mo tātou, a, mo ka uri, a muri ake nei – for us and our children after us*

From the preliminary desk top assessments, there do not appear to be any site specific Ngāi Tahu values identified. However, there is a deep connection between Ngāi Tahu and all of the whenua in the Ngāi Tahu takiwā, and the absence of site-specific values in the preliminary analysis does not detract from that connection, nor does it confirm that site specific values are not present. Further, a section 4 Conservation Act and Te Tiriti principles perspective is required as well, and it may be that areas of land are significant to Ngāi Tahu from that broader perspective. To avoid doubt, nothing in the proposed classification affects, limits or derogates from the rangatiratanga of Ngāi Tahu over its takiwā, including in relation to freshwater; and/or any other rights or interests Ngāi Tahu may have.

## Ecological Values

### Representativeness

The area is a moderate size (150 ha) of forested slopes extending from the valley floor c. 320–c. 540 m, in the Rotorua Ecological District. The area is fully forested, adjoining farmland on the floor of the Warwick valley and the extensive Victoria Forest Park above.

This area encapsulates several tributaries of Warwick River, a tributary of Maruia River, and a part headwater of the larger Buller catchment. It is sandwiched between land that has been cleared for farming (highly modified) and Victoria Forest Park (upslope).

### Diversity and pattern

The area contains the lower forested slopes on the west side of the Warwick valley. Several streams flow through the area. The area contains a single level 4 land environment. No species have been recorded here, nor have any freshwater fisheries values been recorded for any tributaries upstream. In other tributaries in close proximity, there are records of northern flathead galaxias (*Galaxias* species N), dwarf galaxias (*Galaxias divergens*), longfin eel (*Anguilla dieffenbachii*), bluegill bully (*Gobiomorphus hubbsi*) and upland bully (West Coast) (*Gobiomorphus breviceps*).

### Rarity and distinctiveness

Scarlet mistletoe (pirita, *Peraxilla colensoi*) (At Risk: Declining) has been recorded from adjacent areas.

### Ecological context

The area adjoins Victoria Forest Park and forms part of a larger forest sequence and extensive forest area to the west.

## Recreation Values

### Setting

These two areas are in a Backcountry-remote zone. There are no tracks or facilities in these two areas.

### Visitor type and activities typically undertaken

The area is likely to receive little recreation use, with occasional hunting.

## Access

There is no easy access to these areas due to the need to cross private land and Warwick River if trying to access from the Shenandoah Highway. Foot access is possible from Victoria Forest Park.

## Heritage Values

### Historical overview

No historic sites or heritage values recorded.

## Permissions Summary

None recorded.

## Map (aerial photo)

