

## INA\_12 – Inangahua River (35.4775 ha)

Protected Area(s)	Area (ha)	NaPALIS #	# of Primary Parcels
Conservation Area - Inangahua River	20.2761	2807885	1
Conservation Area - Inangahua River	8.9946	2807886	2
Conservation Area - Inangahua Riverbed	6.2068	2807872	1

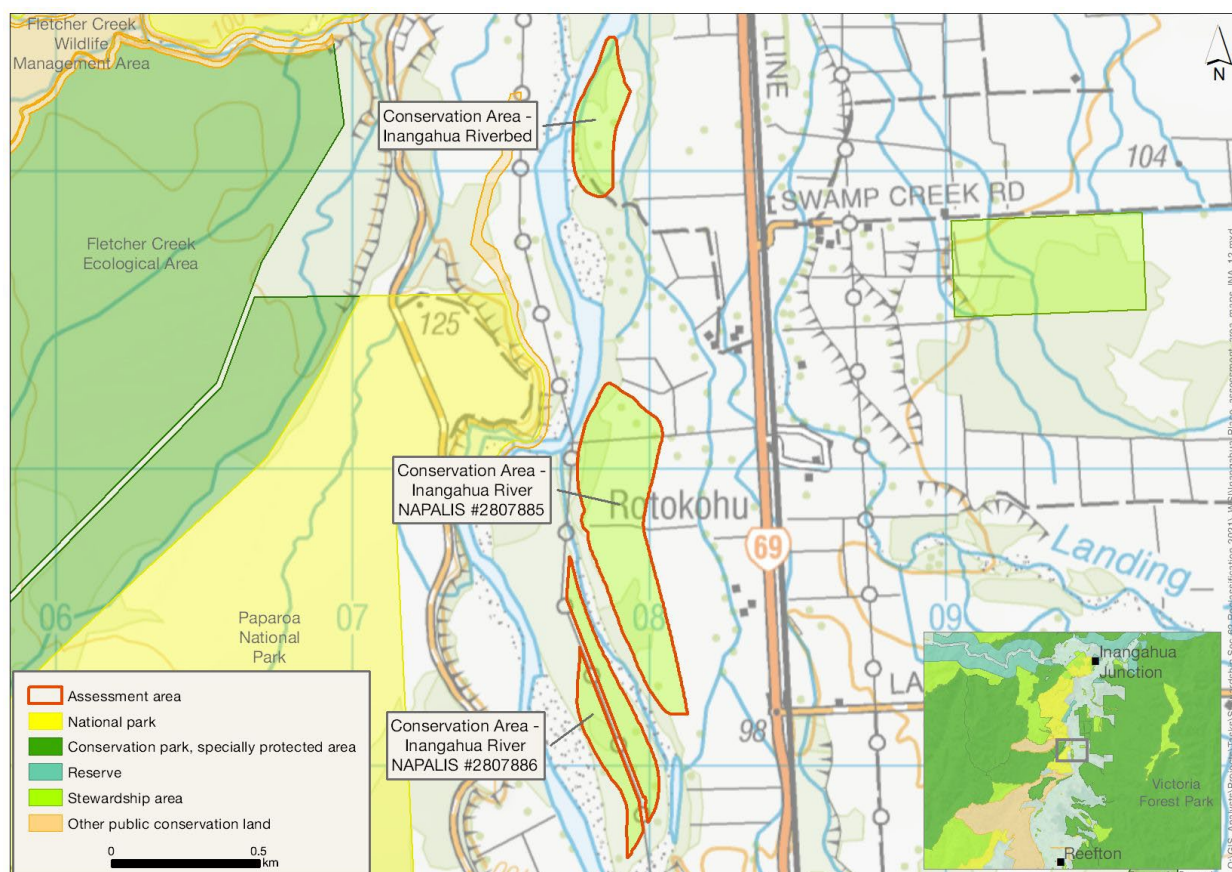
### Location

In the lower Inangahua River Valley at Rotokohu.

### Brief Description

Three disjunct conservation areas in and adjacent to Inangahua River bed. They are largely pasture with some native forest, regenerating forest, and exotic shrubland, and grazing concessions in place. The southern area is subdivided by power lines and the two larger southern parcels are separated by a watercourse. Diversity and pattern are low, and rarity is moderate. There are no tracks or facilities, and occasional fishing is the only likely recreation use. There is no historical interest.

### Map



# Ngāi Tahu Values and Interests

*Mo tātou, a, mo ka uri, a muri ake nei – for us and our children after us*

From the preliminary desk top assessments, there do not appear to be any site specific Ngāi Tahu values identified. However, there is a deep connection between Ngāi Tahu and all of the whenua in the Ngāi Tahu takiwā, and the absence of site-specific values in the preliminary analysis does not detract from that connection, nor does it confirm that site specific values are not present. Further, a section 4 Conservation Act and Te Tiriti principles perspective is required as well, and it may be that areas of land are significant to Ngāi Tahu from that broader perspective. To avoid doubt, nothing in the proposed classification affects, limits or derogates from the rangatiratanga of Ngāi Tahu over its takiwā, including in relation to freshwater; and/or any other rights or interests Ngāi Tahu may have.

## Ecological Values

### Representativeness

The assessment area is lowland alluvial terrace, supporting a mixture of pasture, exotic shrubland, regenerating forest and indigenous hardwoods within the Reefton Ecological District near the boundary of the Maimai Ecological District. Naturalness is low. The areas are largely pasture with some native forest, regenerating forest, and exotic shrubland. There is a grazing concession over the northernmost two areas. There is a high level of predicted naturalness according to the Macroinvertebrate Community Index.

### Diversity and pattern

Diversity and pattern are low. The area is lowland (c. 100 m), alluvial flats of Inangahua River. The vegetation is largely either pasture or exotic shrubland but contains some native forest and regenerating forest, including riparian forest and a small area of Inangahua River and associated riverbed gravels. The area contains a single level 4 land environment.

There are three areas on the banks/floodplain of Inangahua River. There is no permanent flowing water but it is likely to have water during high flows. The main area is mostly developed farmland. There is a low level of diversity in the freshwater systems, but a range of species could utilise this area in flood flow. Nearby are records of giant kōkopu (*Galaxias argenteus*), upland bully (West Coast) (*Gobiomorphus breviceps*), trout, longfin eel (*Anguilla dieffenbachii*), redfin bully (*Gobiomorphus huttoni*), kōaro (*Galaxias brevipinnis*) and bluegill bully (*Gobiomorphus hubbsi*).

### Rarity and distinctiveness

Rarity/special features/distinctiveness – moderate. The area comprises lowland alluvial flats including some riparian forest. Scarlet mistletoe (pirita, *Peraxilla colensoi*) (At Risk: Declining) and creeping herb (*Gratiola concinna*) (Nationally Endangered) both have a few records nearby and are possibly present. The area is the land environment M2.1a, which is classified as 'At Risk'.

### Ecological context

The area consists of three conservation areas (6.2 ha, 20.3 ha and 8.99 ha) on the true right (east) on lowland alluvial flats, including riparian forest on the true right of the river. It is largely adjacent to pasture with parts adjoining Inangahua River, and there is grazing concession over the northern two areas. The southern area is subdivided by power lines. The two larger southern parcels are separated by a watercourse.



## Recreation Values

### Setting

These areas are in a Backcountry-remote zone. There are no tracks or facilities within these areas.

### Visitor type and activities typically undertaken

Likely to receive little recreation use, except occasional fishing.

### Access

Access via Inangahua River.

## Heritage Values

### Historical overview and Sites recorded

No historic sites or heritage values recorded.

## Permissions Summary

- Grazing licence for grazing part of the bed of Inangahua River
- Grazing licence for grazing land adjacent to Inangahua River

## Map (aerial photo)

