

MAW_15 – Haupiri River (105.4399 ha)

| Protected Area(s) | Area (ha) | NaPALIS # | # of Primary Parcels |
|-----------------------------------|-----------|-----------|----------------------|
| Conservation Area – Haupiri River | 83.4176 | 2806540 | 2 |
| Conservation Area – Haupiri | 20.1261 | 2807516 | 4 |
| Conservation Area – Haupiri River | 1.8962 | 2807519 | 2 |

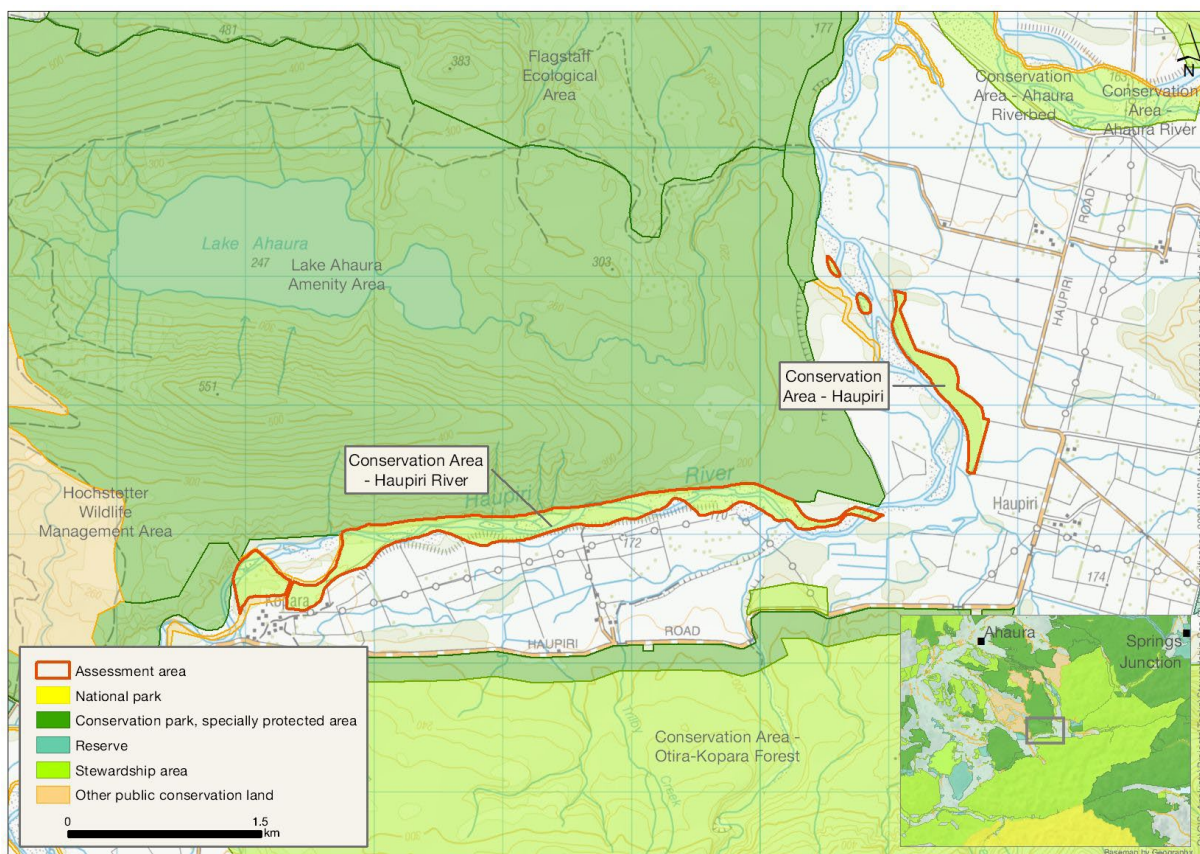
Location

On the Haupiri River between Kopara and Haupiri on the backroads between Jacksons and Nelson Creek.

Brief Description

This assessment area consists of several conservation areas that sit across Haupiri River bed and terraces to the northwest and southeast. The largest conservation area borders the Lake Ahaura Amenity area (to the north), and there is private land to the south. The smaller blocks are surrounded by private farmland. A grazing concession covers approximately 22 ha. There is no easy access or tracks or facilities, but fishers may access the area if they obtain access from landowners.

Map



Ngāi Tahu Values and Interests

Mo tātou, a, mo ka uri, a muri ake nei – for us and our children after us

From the preliminary desk top assessments, there do not appear to be any site specific Ngāi Tahu values identified. However, there is a deep connection between Ngāi Tahu and all of the whenua in the Ngāi Tahu takiwā, and the absence of site specific values in the preliminary analysis does not detract from that connection, nor does it confirm that site specific values are not present. Further, a section 4 Conservation Act and Te Tiriti principles perspective is required as well, and it may be that areas of land are significant to Ngāi Tahu from that broader perspective. To avoid doubt, nothing in the proposed classification affects, limits or derogates from the rangatiratanga of Ngāi Tahu over its takiwā, including in relation to freshwater; and/or any other rights or interests Ngāi Tahu may have.

Ecological Values

Representativeness

The area covers a small part of the Haupiri River bed and terraces in the Hochstetter Ecological District. The forested terraces and islands are representative of a threatened ecosystem type, although highly fragmented. The largest conservation area (of three) covers an 'acutely threatened' land environment, a >5 km length of Haupiri River. These parcels cover fluvial and riparian habitats on a stretch of Haupiri River. Much of the area of these blocks used to be covered by an extensive wetland, but there are no current wetlands. High water quality is predicted, and the riparian margin is patchy but, on the whole, provides a buffer from land use practices (dairy farming).

Diversity and pattern

The diversity is moderate – remnant indigenous forest is present on the river terraces and on some of the islands.

There are no records of freshwater fish within this stretch of Haupiri River, but feeding tributaries and downstream (<5 km) reaches of the receiving Ahaura River have records of longfin eel (*Anguilla dieffenbachii*), dwarf galaxias (*Galaxias divergens*), kōaro (*Galaxias brevipinnis*), common bully (*Gobiomorphus cotidianus*), torrentfish (piripiripōhatu, *Cheimarrichthys fosteri*) and brown trout (*salmo trutta*).

Rarity and distinctiveness

The braided river ecosystem is classified as Endangered. No at-risk or threatened terrestrial species are recorded on BioWeb. However, there could be forest birds, lizards and invertebrates using this area as habitat. The land environment classification is Acutely Threatened.

There are a number of freshwater fish species of conservation concern within this catchment: longfin eel, dwarf galaxias, kōaro and torrentfish (all At Risk: Declining), common bullies (Not Threatened) and brown trout.

Ecological context

This assessment area (105 ha) consists of several conservation areas that sit across the Haupiri River bed and terraces to the northwest and southeast. This braided river ecosystem includes open gravel islands, channels, forested terraces islands and farmland on the terrace above the river.

The largest conservation area borders the Lake Ahaura Amenity area (to the north), and there is private land to the south. The smaller blocks are surrounded by private farmland. Most of this length of river has a reasonably good riparian buffer that is comprised of shrubland, scrub or regenerating indigenous forest in sections. The

shape of the conservation areas is such that quite a bit of the area is now used for intensive dairy farming, and the land therein has been highly modified.

Recreation Values

Setting

These areas are in a Backcountry-remote zone, with no tracks or facilities.

Visitor type and activities typically undertaken

Unlikely to receive much recreation use. Fishers may access the area if they obtain access from landowners.

Access

No easy access - requires driving through adjoining farms.

Heritage Values

Historical overview

Sites or Heritage values recorded

None recorded

Permissions summary

A grazing licence for dairy grazing on 21.94 ha part bed of Haupiri River.

Map (aerial photo)

