

INA_17 – Waitahu River (46.2005 ha)

Protected Area(s)	Area (ha)	NaPALIS #	# of Primary Parcels
Conservation Area - Waitahu River	46.2005	2807897	1

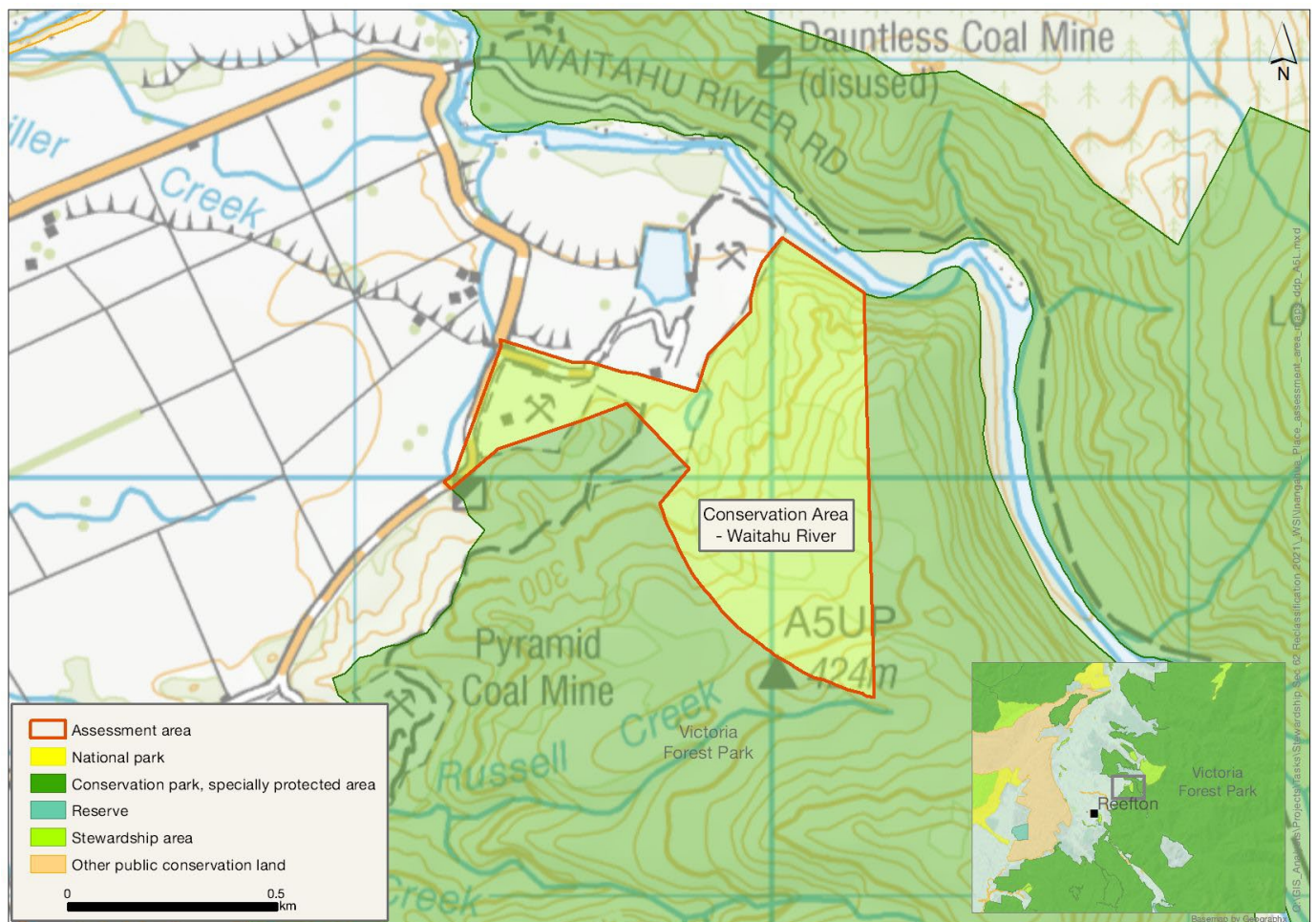
Location

On the true left/southwest side of Waitahu River, north of Reefton.

Brief Description

Nearly a quarter of the area appears to be an active mining operation with coal storage, settling ponds and roads. There are areas of forest and shrubland at various stages of regeneration from a history of forest clearance from logging and fire, to mining. No threatened or at-risk species are recorded. There are no DOC tracks or facilities or recreational use. A concession is held for fuel storage. There is some heritage value for the area's association with 19th and early 20th century gold mining.

Map



Ngāi Tahu Values and Interests

Mo tātou, a, mo ka uri, a muri ake nei – for us and our children after us

There is a deep connection between Ngāi Tahu and all of the whenua in the Ngāi Tahu takiwā, and the absence of site-specific values in the preliminary analysis does not detract from that connection, nor does it confirm that site specific values are not present. Further, a section 4 Conservation Act and Te Tiriti principles perspective is required as well, and it may be that areas of land are significant to Ngāi Tahu from that broader perspective. To avoid doubt, nothing in the proposed classification affects, limits or derogates from the rangatiratanga of Ngāi Tahu over its takiwā, including in relation to freshwater; and/or any other rights or interests Ngāi Tahu may have.

Ecological Values

Representativeness

Largely forest and shrubland at various stages of regeneration from a history of forest clearance; from logging, fire and mining, leading to fragmentation of the indigenous vegetation. Nearly a quarter of the total area appears to be a mining operation with coal storage, settling ponds and roads. There is road and former coal yards and storage, including pits and ponds; probably contaminated. Unlikely to have high freshwater values.

Diversity and pattern

This area ranges from the valley floor through to 424 m above sea level. There could be sections of vegetation that show this altitudinal variation, however, if present it may be patchy because of past land use. There are no waterways apart from a small pond which looks to be a settling pond connected to the coal mining operations.

Rarity and distinctiveness

Modified ecosystem and vegetation sequence. No threatened or at-risk species are recorded. Level 4 land environment P5.1d, O1.4a and O1.4b, all show a decrease in indigenous vegetation cover (1997-2002), No Threat category.

Ecological context

This 46.2 ha of land adjoins Victoria Forest Park to the south and east. The altitudinal range is from Waitahu River in the valley floor to 424 m above sea level. Multi-aged regeneration from open land, to shrublands, to secondary growth forest. No old growth forest present from what can be seen on the aerial photo.

Recreation Values

Setting

This area in a Backcountry-remote zone, with no tracks or facilities managed by the Department.

Visitor type and activities typically undertaken

The area is likely to receive little recreation use.

Access

Access via Gannons Road.

Heritage Values

Historical overview

The Inglewood to Gannons (The Painkiller) Track was part of the Murray Creek system of tracks and workings, and provided access to several small claims north of the Inglewood Gold Mine (3–4 km south of the area).

Sites recorded

One recorded archaeological site: L30/14 Inglewood to Gannons (The Painkiller) Track.

Heritage values

The historical value of the track lies in its local association with 19th and early 20th century gold mining.

Permissions Summary

Concession held for coal washery site allowing for fuel storage at Burkes Creek, Waitahu River.

Map (aerial photo)

