

# INA\_23 – Mai Mai – Te Wharau (9224.4194 ha)

Protected Area(s)	Area (ha)	NaPALIS #	# of Primary Parcels
Conservation Area - Mai Mai - Te Wharau	8472.5362	2806938	2
Conservation Area - Otututu Valley	751.8832	2806882	3

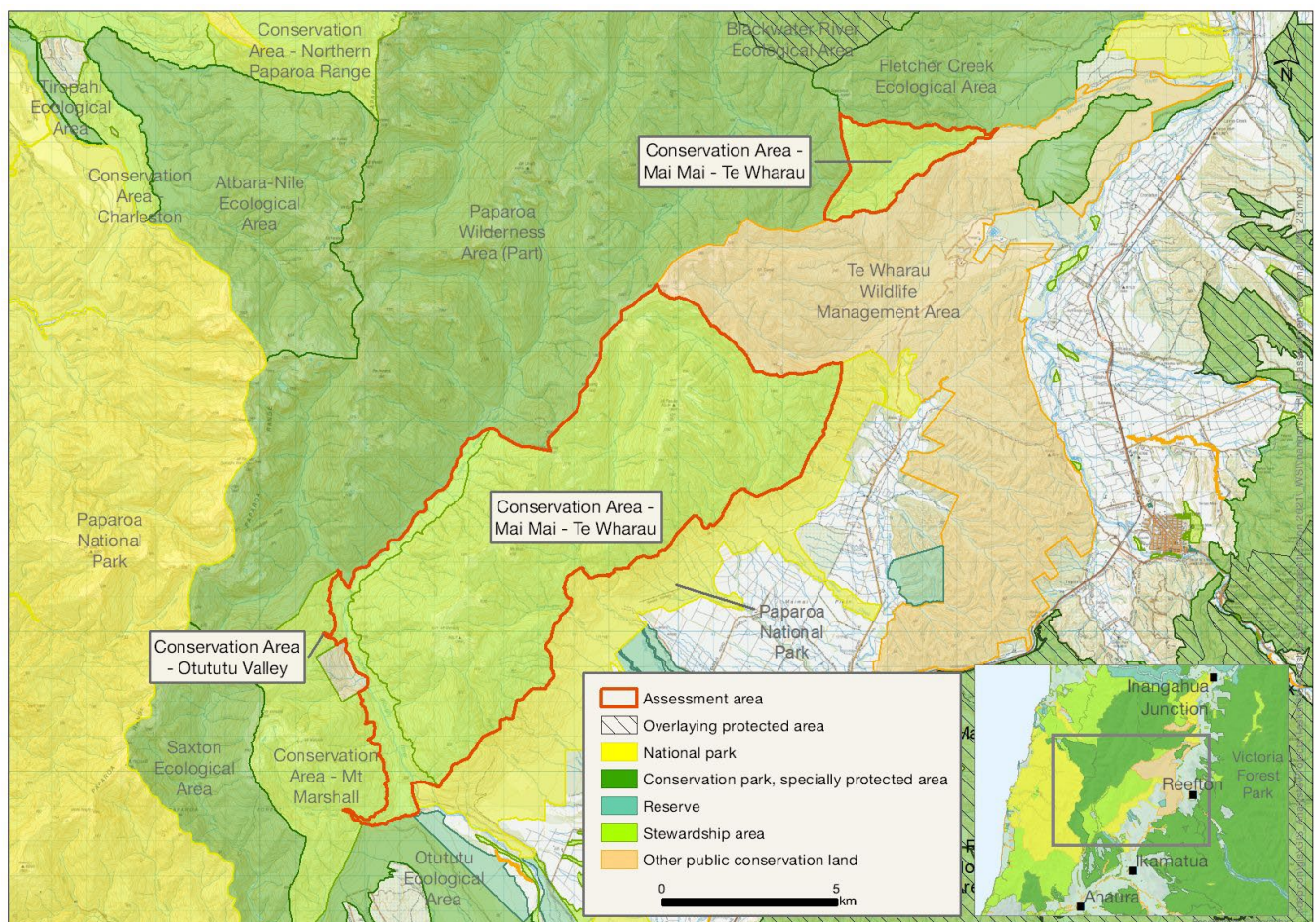
## Location

Two large separate forested mountainous blocks on the northeastern arm of the main Paparoa Ranges.

## Brief Description

The northern section covers the lower Te Wharau River gorge and its steep beech-clad valley slopes, and the south block covers the Mt McHardy to Mt Stevenson Range, with high tussock alpine tops and beech-forested slopes draining into the glaciated valleys of Stony Creek, Maimai Creek and Otututu/Rough River. A fine representation of an altitudinal sequence in indigenous vegetation, with gradients in vegetation and fauna due to variations in not only altitude, but also aspect and geology. Recreation includes hunting, fishing and use of an official tramping track. Permissions are in place for telecommunications purposes.

## Map



# Ngāi Tahu Values and Interests

*Mo tātou, a, mo ka uri, a muri ake nei – for us and our children after us*

From the preliminary desk top assessments, there do not appear to be any site specific Ngāi Tahu values identified. However, there is a deep connection between Ngāi Tahu and all of the whenua in the Ngāi Tahu takiwā, and the absence of site-specific values in the preliminary analysis does not detract from that connection, nor does it confirm that site specific values are not present. Further, a section 4 Conservation Act and Te Tiriti principles perspective is required as well, and it may be that areas of land are significant to Ngāi Tahu from that broader perspective. To avoid doubt, nothing in the proposed classification affects, limits or derogates from the rangatiratanga of Ngāi Tahu over its takiwā, including in relation to freshwater; and/or any other rights or interests Ngāi Tahu may have.

## Ecological Values

### Representativeness

These conservation areas comprise a significant proportion of the Maimai Ecological District. Characteristic primary forest is dominated by silver beech (*Lophozonia menziesii*) on the mid and upper slopes, and in riparian strips on cold valley bottoms. On wide higher altitude ridge crests, mountain beech (*Fuscospora cliffortioides*) with pink pine (*Halocarpus biforme*) takes over. On the mid-lower slopes, beech is supplemented by some podocarps (*Podocarpaceae* and *Phyllocladaceae*). Note that the assessment area does not include the low altitude outwash terraces which formerly supported tall podocarp stands (now logged). There is altitudinal range from valley floor to alpine zone (open rocky areas). High level of representativeness and naturalness for the Maimai Ecological District. It is a large area with numerous small waterways and high predicted naturalness.

### Diversity and pattern

A diverse range of ecosystems from cold valley floor forests, warmer midslopes forest, subalpine forest on steep slopes, and extensive tussock alpine zone. Bare rocky ridgeline and scree in places in the subalpine zone. A fine representation of an altitudinal sequence in indigenous vegetation, with gradients in vegetation and fauna due to variations in not only altitude, but also aspect and geology.

There are no freshwater species recorded here, but nearby in similar systems are longfin eel (*Anguilla dieffenbachii*), dwarf galaxias (*Galaxias divergens*), upland bully (West Coast) (*Gobiomorphus breviceps*), redfin bully (*Gobiomorphus huttoni*), brown trout (*Salmo Trutta*) (Introduced) and torrentfish (piripiripōhatu, *Cheimarrichthys fosteri*).

### Rarity and distinctiveness

A distinct and valuable fauna, great spotted kiwi (roroa, *Apteryx maxima*) and whio Blue Duck, *Hymenolaimus malacorhynchos*) (both Nationally Vulnerable), as well as now rare forest birds, kākārīki (yellow-crowned parakeet, *Cyanoramphus auriceps*) and kākā (*Nestor meridionalis*) (Nationally Vulnerable). There are three genetically distinct as yet undescribed and data-deficient large *Powelliphanta* land snail taxa in the subalpine and alpine zone. This area is adjacent to the Te Wharau Wildlife Management Unit and is an integral part of the wider Paparoa Ranges area, providing an important corridor linking the wetter western Paparoa Ranges with the drier eastern range. Therefore, it is part of contiguous habitat for many species and provides a habitat corridor for species movement. Level 4 land environment P3.1b Decrease in indigenous vegetation cover (1997–2002), No Threat category.

There are no species recorded here, however, nearby in similar systems are longfin eel, dwarf galaxias and torrentfish (all At Risk: Declining), and nearby are numerous whio records.

## **Ecological context**

This area (9224 ha) is part of the Maimai Ecological District, adjacent to the Mt Marshall Conservation Area and split in two by Te Wharau Wildlife Management Area. Three quarters of it is southwest of the wildlife management area and one quarter is to the northeast of it. The area covers the eastern flank of the Paparoa Ranges and provides a corridor from the wildlife management area through to the western Paparoa Ranges. The areas adjoin the Paparoa Wilderness Area, Paparoa National Park, the Te Wharau Wildlife Management Area, and Saxton Ecological Area, with numerous small waterways in the forested area. There is a square of LINZ land between this assessment area and Mt Marshall.

## **Recreation Values**

### **Setting**

These large areas are in a Backcountry-remote zone and a remote zone. There are no DOC-managed tracks or facilities, but Giles Creek Track (the ridge to the south) is an unofficial route up to Mt Steele and to the north (through Te Whare Wildlife Management Area).

### **Visitor type and activities typically undertaken**

There is a known fallow deer herd popular with hunters flying in for February. Otututu/Rough River is a wellknown fishing river, also used by occasional trampers. Stony Creek allows public access.

### **Access**

Access is by foot through adjoining conservation land or helicopter operators with irregular landing permit.

## **Heritage Values**

### **Historical overview**

No historic sites or heritage values recorded.

## **Permissions Summary**

- Concession licence for telecommunication facilities at Mt Raoulia
- Concession easement for several telecommunications sites. Funding for the sites was provided by grants from Crown Infrastructure Partners to build the new sites and provide internet in rural areas

# Map (aerial photo)

