

HOK_22 – Kaniere Farm (1429.2811 ha)

Protected Area(s)	Area (ha)	NaPALIS #	# of Primary Parcels
Conservation Area - Kaniere Farm	52.1005	2805693	8
Conservation Area - Kaniere Farm	1377.1806	2805694	21

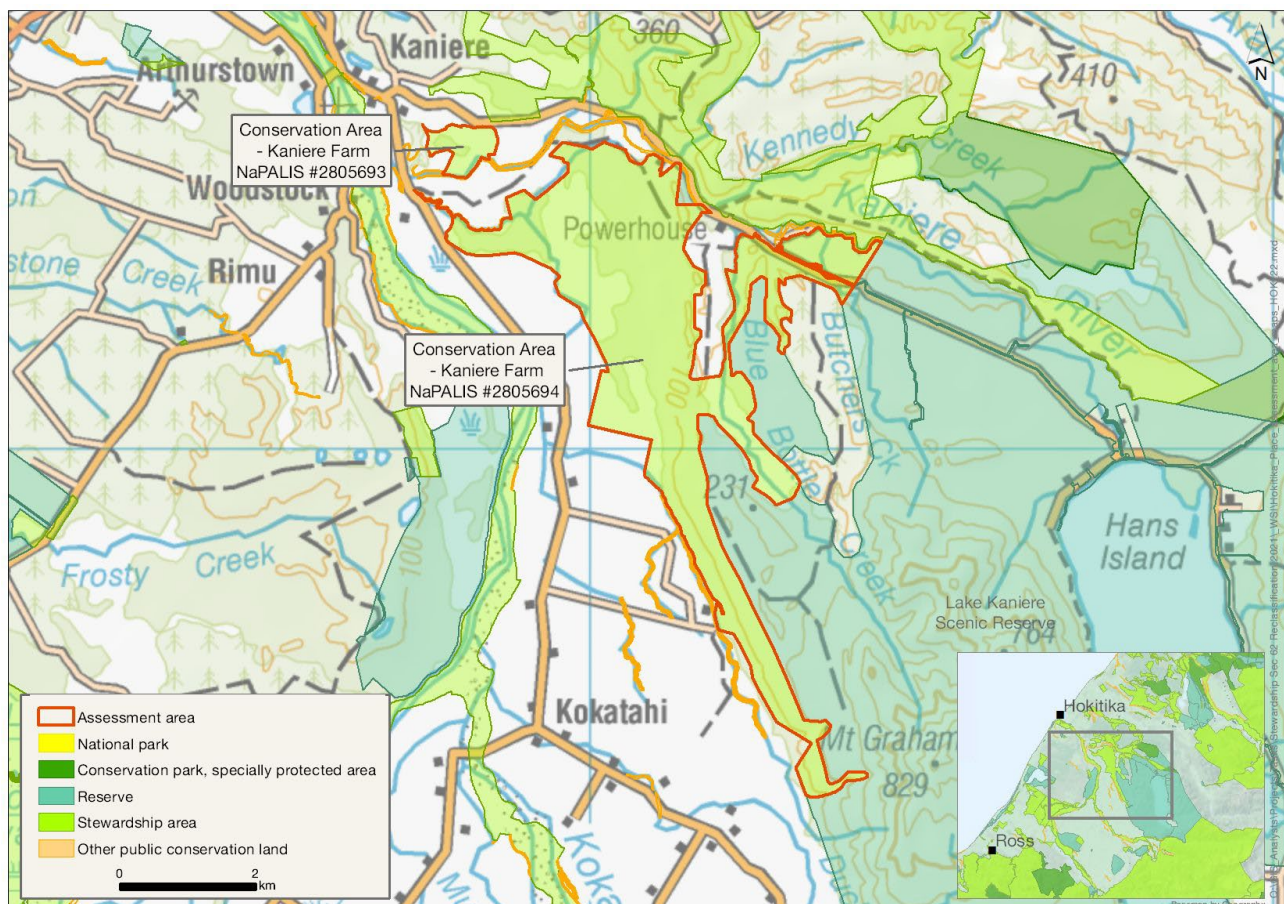
Location

Southeast of Hokitika, on the eastern side of Hokitika River and south of Kaniere River.

Brief Description

Formerly part of the Kaniere Farm settlement, the area consists of two main units – flatter low-lying and generally swampy land to the west, and moraine terraces of cutover podocarp/hardwood forest to the east and south. This is the largest area of wetlands associated with Hokitika River alluvial flats that is unconverted to farmland. It has notable high diversity and unusual mix of freshwater fish species. The lamprey observation (2003) is exciting – not much is known about kanakana, but this record indicates spawning habitat for this vulnerable species within Raft Creek. Gold was discovered in Bluebottle Creek in 1866 and there are associated archaeological sites. While there are no DOC-managed tracks or facilities, a section of the West Coast Wilderness Trail (cycling) is in the eastern part of the area, managed by a trust on behalf of local district councils. Four easements are in place.

Map



Ngāi Tahu Values and Interests

Mo tātou, a, mo ka uri, a muri ake nei – for us and our children after us

From the preliminary desk top assessments, there do not appear to be any site specific Ngāi Tahu values identified. However, there is a deep connection between Ngāi Tahu and all of the whenua in the Ngāi Tahu takiwā, and the absence of site-specific values in the preliminary analysis does not detract from that connection, nor does it confirm that site specific values are not present. Further, a section 4 Conservation Act and Te Tiriti principles perspective is required as well, and it may be that areas of land are significant to Ngāi Tahu from that broader perspective. To avoid doubt, nothing in the proposed classification affects, limits or derogates from the rangatiratanga of Ngāi Tahu over its takiwā, including in relation to freshwater; and/or any other rights or interests Ngāi Tahu may have.

Ecological Values

Representativeness

This site contains swamp and bog wetlands on former Hokitika River alluvial flats and cutover podocarp (*Podocarpaceae* and *Phyllocladaceae*)/hardwood forest to the east on moraine, linking the flats to the Kaniere Scenic Reserve. Unsuccessful attempts were made to drain the swamplands post-war but fortunately the core area remained relatively intact, with a mosaic of wetland communities highly representative of what once must have been extensive kahikatea (*Dacrycarpus dacrydioides*) forests on the poorer drained areas associated with the Hokitika River flats and are now very rare in Hokitika Ecological District. Most of this wetland is recognised in the West Coast Regional Plan (Whiley Creek Wetland) as a schedule 1 wetland.

Butchers Creek flows through the middle of the area, with very high predicted water quality and a high level of naturalness to its catchment (indigenous forest of Lake Kaniere Scenic Reserve). This area contains multiple streams (Taminelli, Whiley, Blue Bottle, Coal and Raft creeks run along the southwestern boundary) that have a high level of naturalness and water quality. Coal and Blue Bottle creeks have small sections impacted by land use such as forestry and farming.

The smaller northeastern section is in an historic and extensive pākihi. Kaniere River runs along the northern boundary of this area and Kaniere Rd along the southern boundary.

Diversity and pattern

This is the largest area of wetlands associated with Hokitika River alluvial flats that has not been converted to farmland. Within those wetlands is a mosaic of vegetation from flax swamps in standing water to pākihi, kahikatea remnants and a small area of raupō (bullrush, *Typha orientalis*). The forested moraine slopes connect these wetlands to the expansive forest in Lake Kaniere Scenic Reserve. It also contains an area of wetland associated with Blue Bottle, Lower Butchers Creek and Kaniere River. Wetland birds recorded include Australasian bittern (matuku hūrepo, *Botaurus poiciloptilus*), fernbird (mātātā, *Bowdleria punctata*) and waterfowl. Chinook salmon (*Oncorhynchus tshawytscha*) and perch (*Perca fluviatilis*) have also been observed.

Numerous freshwater surveys within Butchers Creek, within and just beyond this area, reveal a very high diversity of freshwater native fish: shortjaw kōkopu (*Galaxias postvectis*), inanga (*Galaxias maculatus*), giant kōkopu (*Galaxias argenteus*), longfin eel (*Anguilla dieffenbachii*), torrentfish (piripiripōhatu, *Cheimarrichthys fosteri*), kōaro (*Galaxias brevipinnis*), kōura (freshwater crayfish, *Paranephrops planifrons*), freshwater shrimp (*Paratya*), redfin bully (*Gobiomorphus huttoni*), common bully (*Gobiomorphus cotidianus*) and trout. It is likely that this area provides habitat for brown mudfish (*Neochanna apoda*) and banded kōkopu (*Galaxias fasciatus*).

Rarity and distinctiveness

The once expansive wetlands on the flats associated with Hokitika River have largely been converted to farmland. This assessment area along with Groves Swamp (HOK_33 - Butlers) contains the largest unmodified areas of wetland in Hokitika Place and is a mosaic of flax swamp and pākihi, depending on drainage fertility and the age of surface. These wetlands are also habitat for known populations of fernbird (At Risk: Declining) and bittern (Nationally Critical).

This area has a notable high diversity and unusual mix of freshwater fish species, many of which are of conservation concern. Butchers Creek appears to provide habitat for species not usually seen so close together, (e.g. shortjaw and giant kōkopu) reflecting heterogeneity in the fluvial habitat (e.g. variable substrate varying flow with sections of stream flowing through wetland). The lamprey observation (2003) is exciting - not much is known about kanakana, but this record indicates spawning habitat for this vulnerable species within Raft Creek.

Ecological context

The podocarp/hardwood forests here are the western extent of forested moraine and hill country that stretches between Arahura and Hokitika rivers and includes Lake Kaniere Scenic Reserve. The western wetlands abut farmland and developed pasture, and include a large section of alluvial flats. This parcel is contiguous with large blocks of public conservation land with a high level of freshwater naturalness and very high diversity. Lake Kaniere Scenic Reserve borders this parcel to the east. The very diverse mosaic of wetland and fluvial habitat here provides habitat to a very high diversity of freshwater biota. This area is surrounded by private land to the north and west, but adjoins public conservation land to the east and northeast. Better known as Kline Swamp, the adjacent drainage occurring for dairying has somehow affected hydrology but the wetland remnants there have demonstrated some good resilience.

Recreation Values

Setting

These areas are in a Backcountry-remote zone, with no DOC-managed tracks or facilities. A section of the West Coast Wilderness Trail - Kaniere Wards Road to Hurunui Jacks - is in the eastern part of the area. This is managed by a trust on behalf of the Grey and Westland district councils.

Visitor type and activities typically undertaken

The West Coast Wilderness Trail is very popular with locals and domestic visitors from all over the country. The mountain bike ride is a multiday trail between Greymouth and Ross and is a great introduction to riding.

Access

Access via Lake Kaniere Road and Kaniere Kowhitirangi Road.

Heritage Values

Historical overview

Gold was discovered in Bluebottle Creek in 1866 and worked using high pressure hydraulic sluicing, until the turn of the century. Bluebottle Creek workings (J33/63) sit within the eastern portion of the stewardship land.

Sites recorded

- J33/63 Bluebottle Terrace workings comprising almost continuous 10 m high sluice face with associated tail races, stacked tone walls and bridges and tailings fans along about 1 km of the creek

- J33/64 goldmining remains comprising sluice faces, tail races, stacked tailings and tailing fans

Heritage values

Associated with the Kaniere goldfield.

Modifying factors

There are almost certainly further unrecorded archaeological sites within the area associated with gold mining.

Permissions summary

- Easement for poles and powerline at Lake Kaniere
- Easement for right of way over 5.6420 ha of Block VI, Kaniere SD Rural Section 6608
- Easement for water supply at Kaniere River
- Easement being the addition of easement access roads to Water Supply pipeline agreement

Map (aerial photo)

