

# TWP\_45 – Turnbull River (106.6786 ha)

Protected Area(s)	Area (ha)	NaPALIS #	# of Primary Parcels
Conservation Area – Turnbull River	7.953	2800936	1
Conservation Area – Turnbull River	1.8355	2800937	1
Conservation Area – Turnbull River	96.8901	2800938	2

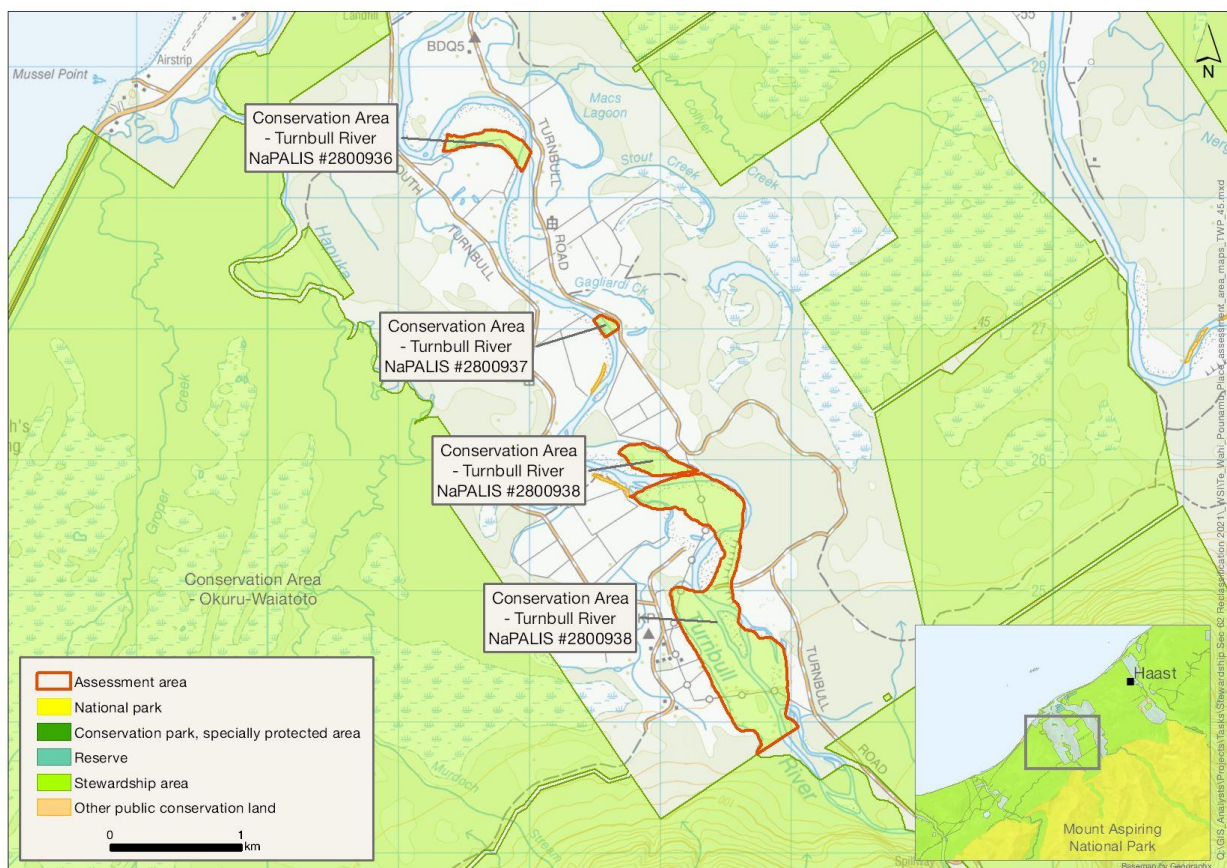
## Location

Ranging from 2-7 km up Turnbull River, south of Haast.

## Brief Description

Three separate and disjunct areas with the same name along the lower reaches of the Turnbull Valley. They are surrounded by freehold agricultural land (grazing permissions are in place) and are predominantly rough pasture with remnant forest and, very likely wetland. The areas are connected by legal road and the Turnbull River, which is popular for whitebaiting. There is access but no tracks, facilities or heritage value.

## Map



# Ngāi Tahu Values and Interests

*Mo tātou, a, mo ka uri, a muri ake nei – for us and our children after us*

From the preliminary desk top assessments, there do not appear to be any site specific Ngāi Tahu values identified. However, there is a deep connection between Ngāi Tahu and all of the whenua in the Ngāi Tahu takiwā, and the absence of site specific values in the preliminary analysis does not detract from that connection, nor does it confirm that site specific values are not present. Further, a section 4 Conservation Act and Te Tiriti principles perspective is required as well, and it may be that areas of land are significant to Ngāi Tahu from that broader perspective. To avoid doubt, nothing in the proposed classification affects, limits or derogates from the rangatiratanga of Ngāi Tahu over its takiwā, including in relation to freshwater; and/or any other rights or interests Ngāi Tahu may have.

## Ecological Values

### Representativeness

The areas occupy river flats along the lower Turnbull River. They are predominantly rough pasture with remnant forest and, very likely, wetland. They have a moderately low representativeness and naturalness value for Haast Ecological District. Due the natural hydrological regime of Turnbull River, the riverbed components of the units are highly representative of this type of river. High water quality is predicted, with the upper catchment protected by national park – the naturalness is indicative of the river condition upstream. Lower catchment, not captured within this assessment area, seems to be pastoral, but swamp and pākihi wetlands have been identified between here and the mouth of Turnbull River.

### Diversity and pattern

The areas are largely on the floodplain of the lower Turnbull River and have fine scale topographic patterning including drainage channels. They include areas of riverbank gravels and sections of the river. The three areas are all part of a single level 4 land environment. There is limited recorded avifauna use and diversity.

Bluegill bully (*Gobiomorphus hubbsi*), giant kokopu (*Galaxias argenteus*) and torrentfish (piripiripōhatu, *Cheimarrichthys fosteri*) have all been identified as present, with records of additional species recorded slightly downstream: īnanga (*Galaxias maculatus*), kōaro (*Galaxias brevipinnis*), lamprey (kanakana, *Geotria australis*), longfin eel (*Anguilla dieffenbachii*), redfin bully (*Gobiomorphus huttoni*) and common bully (*Gobiomorphus cotidianus*). Kōaro have also been recorded upstream, showing importance of the area for migratory fish.

### Rarity and distinctiveness

The area occupies the floodplain of the lower Turnbull River containing some remnant lowland forest and a small amount of the naturally rare ecosystem type – (semi) braided riverbed. Īnanga, bluegill bully, giant kōkopu, torrentfish, longfin eel, kōaro (all At Risk: Declining), and lamprey (Nationally Vulnerable) are present.

### Ecological context

The areas are connected by legal road and Turnbull River. They appear to be unfenced and grazed as part of the adjacent farmland. The largest area, in the southeast, is approximately 9 ha and includes land on both sides of the river. It is adjacent to the large Okuru-Waitoto Conservation Area. The entire area is in Te Wāhipounamu – Southwest New Zealand World Heritage Area. Upstream catchment is preserved by Mt Aspiring National Park, while large portions of the associated wetlands are captured under other proximal conservation areas.

## **Recreation Values**

### **Setting**

These areas are in a Backcountry-remote zone in and adjacent to the bed of the Turnbull River. There are no tracks or facilities in the area. The areas appear to be partially grazed.

### **Visitor type and activities typically undertaken**

None recorded, although the Turnbull River is popular for whitebaiting.

### **Access**

These areas can be accessed from Turnbull Road.

## **Heritage Values**

### **Sites recorded**

None recorded.

### **Heritage values**

No value statement possible.

### **Modifying factors**

None recorded.

## **Permissions summary**

Grazing licence for grazing the northern reaches of Turnbull River, over approx. 115.7 ha, 5 areas

Grazing licence for grazing 8 areas: the true right Turnbull Valley; C: foot of Selborne Range; D: coastline North of Waitoto River Mouth; E & F: true right Arawhata Rivermouth; I: North of Hannahs Clearing; H: North of Arawhata Rivermouth

## Map (aerial photo)

