

TWP_37 – Jacobs River (0.3465 ha)

Protected Area(s)	Area (ha)	NaPALIS #	# of Primary Parcels
Conservation Area – Jacobs River	0.1379	2804995	1
Conservation Area – Jacobs River	0.2086	2804996	1

Location

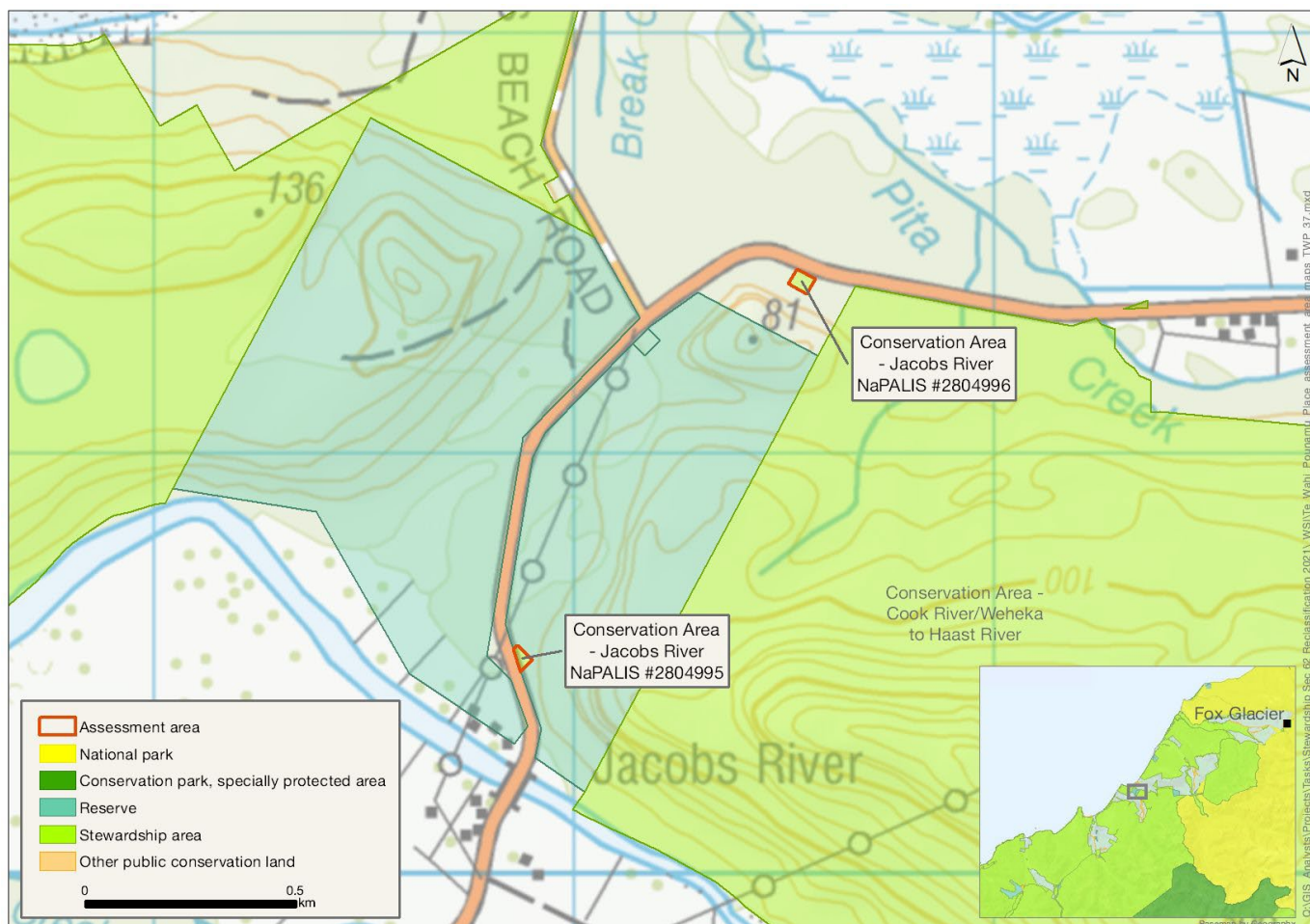
The eastern side of SH6 near Makawhio/Jacobs River, south of Fox Glacier.

Brief Description

Two small areas of lowland alluvial forest with limited representativeness of Karangarua Ecological District and limited ecological diversity. There is access but no tracks or facilities. No permissions, and occasional hunting.

Mana Whenua and the Department have previously discussed disposing Conservation Area 2804995 to Mana Whenua. The surrounding Jacobs River Scenic Reserve land was previously Māori Reserve land.

Map



Ngāi Tahu Values and Interests

Mo tātou, a, mo ka uri, a muri ake nei – for us and our children after us

There is a deep connection between Ngāi Tahu and all of the whenua in the Ngāi Tahu takiwā. A section 4 Conservation Act and Te Tiriti principles perspective is required, and it may be that areas of land are significant to Ngāi Tahu from that broader perspective. To avoid doubt, nothing in the proposed classification affects, limits or derogates from the rangatiratanga of Ngāi Tahu over its takiwā, including in relation to freshwater; and/or any other rights or interests Ngāi Tahu may have.

Discussions have previously occurred with the Department of Conservation and Mana Whenua regarding the disposal of the southern conservation area (NaPALIS 2804995) to Mana Whenua for future Papatipu Rūnanga purposes. The northern conservation area (NaPALIS 2804996) is adjacent to Māori Reserve land which recognises the historic occupation within this area.

Further assessment of the values and opportunities of these conservation areas for Ngāi Tahu is required, as provided for by section 4 Conservation Act and Te Tiriti principles of informed decision making and active protection. Ngāi Tahu may have future aspirations for this land and so those aspirations must be recognised, considered and provided for, when determining a suitable classification for this land.

Ecological Values

Representativeness

The assessment area has limited representativeness of Karangarua Ecological District. These small forest-clothed areas adjoin Haast Highway. One is surrounded by Jacobs Creek Scenic Reserve.

Diversity and pattern

These small, forested areas have limited ecological diversity. The assessment area contains two land environments. Both common and rare forest birds are likely to use the habitat such as tomtit (ngirungiru, *Petroica macrocephala*), bellbird (korimako, *Anthornis melanura*), kererū (New Zealand pigeon, *Hemiphaga novaeseelandiae*), kārearea (New Zealand falcon, *Falco novaeseelandiae*) and tūī (*Prothemadera novaeseelandiae*).

Rarity and distinctiveness

It is a lowland alluvial forest area that is an integral part of the Jacobs Creek Scenic Reserve and the extensive Cook River/Weheka to Haast Conservation Area. Likely used by some rarer bird species within the area including kākā (*Nestor meridionalis*) (Nationally Vulnerable), kea (*Nestor notabilis*) (Nationally Endangered), kākārīki (yellow-crowned parakeet, *Cyanoramphus auriceps*) and pipit (*Anthus novaeseelandiae*) (both At Risk: Declining) and long-tailed cuckoo (koekoeā, *Eudynamys taitensis*) (Naturally Uncommon).

Ecological context

The area is on the alluvial flats of the Makawhio/Jacobs River, and the southern area is surrounded by Jacobs Creek Scenic Reserve. The assessment area is in Te Wāhipounamu – South West New Zealand World Heritage Area.

Recreation Values

Setting

These areas are in a Backcountry-remote zone, with no tracks or facilities.

Visitor type and activities typically undertaken

Occasional hunting.

Access

Access from SH6 Makawhio/Jacobs River.

Heritage Values

Sites recorded

None recorded.

Heritage values

No value statement possible.

Modifying factors

None recorded.

Permissions summary

None recorded.

Map (aerial photo)

