

# INA\_43 – Maruia River West Bank and Shenandoah (4871.8138 ha)

Protected Area(s)	Area (ha)	NaPALIS #	# of Primary Parcels
Conservation Area – Maruia River West Bank	4415.6745	2807875	22
Conservation Area – Shenandoah	456.1393	2807815	3

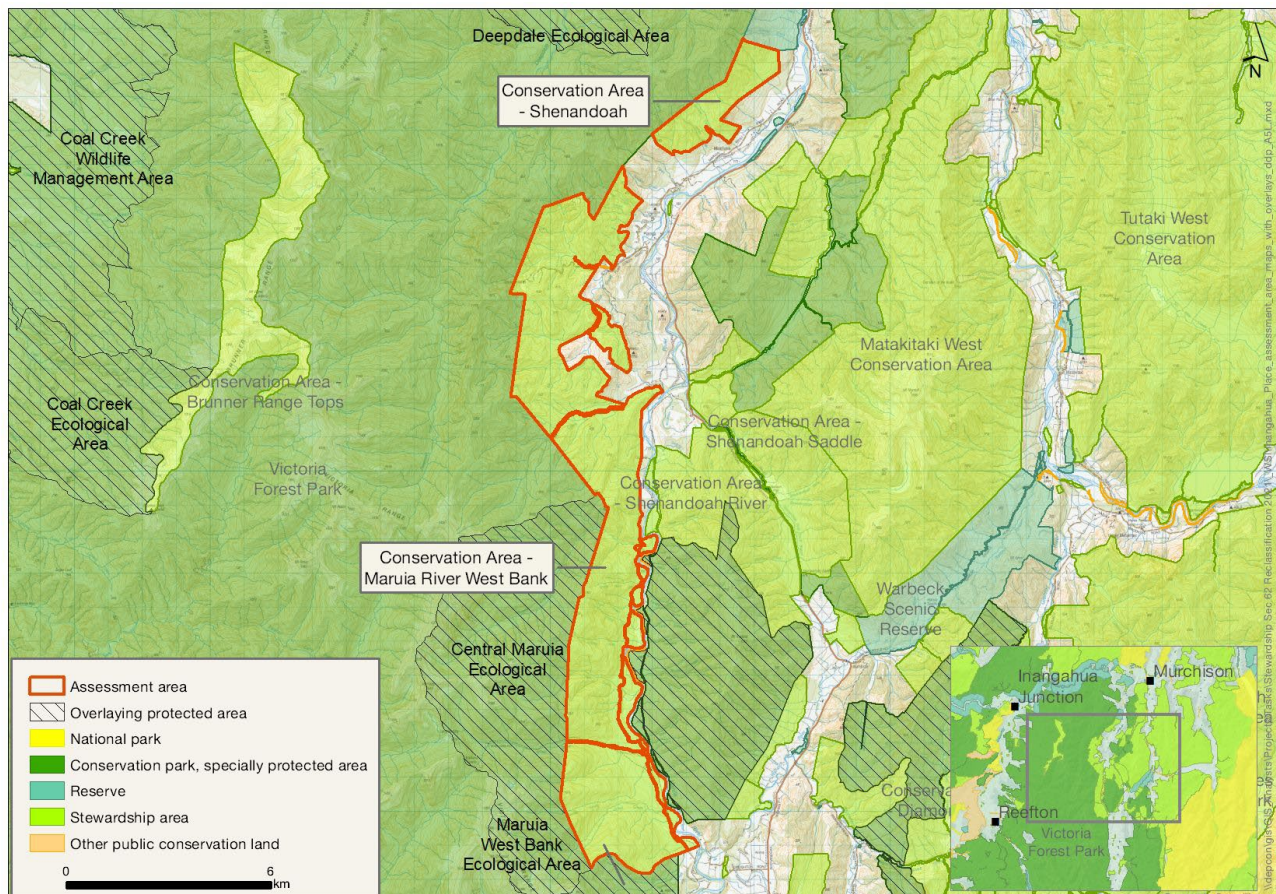
## Location

Hill slopes on the western side of Maruia River, from Minnehaha in the north, to near Warwick Junction in the south.

## Brief Description

A large (4416 ha) area of lowland and montane beech forest on lower hillslopes. The area extends from the floor of Maruia Valley to the midslope of Victoria Range. There are no records of native freshwater fish here, but there are records of three mistletoe species (all At Risk: Declining) and other threatened species are also believed to be here. High use for rafting, kayaking, and fishing at the southern end. Otherwise, occasional hunting and tramping. One grazing licence is in place. This area has played an important part in New Zealand’s conservation history, being the inspiration for the Maruia Declaration, which demanded legal recognition of native forests and an end to their logging.

## Map



# Ngāi Tahu Values and Interests

*Mo tātou, a, mo ka uri, a muri ake nei – for us and our children after us*

From the preliminary desk top assessments, there do not appear to be any site specific Ngāi Tahu values identified. However, there is a deep connection between Ngāi Tahu and all of the whenua in the Ngāi Tahu takiwā, and the absence of site-specific values in the preliminary analysis does not detract from that connection, nor does it confirm that site specific values are not present. Further, a section 4 Conservation Act and Te Tiriti principles perspective is required as well, and it may be that areas of land are significant to Ngāi Tahu from that broader perspective. To avoid doubt, nothing in the proposed classification affects, limits or derogates from the rangatiratanga of Ngāi Tahu over its takiwā, including in relation to freshwater; and/or any other rights or interests Ngāi Tahu may have.

## Ecological Values

### Representativeness

A large area of beech (*tawhai*, *Fuscopora* and *Lophozonia*) forest extending from valley floor to midslopes on the Victoria Range (c. 200–930 m), in the Reefton Ecological District, with high representative values. The area is almost totally clothed in beech forest. There are two areas of alluvial flats that are pasture, and some parts in the north have been historically cleared. 1.1 EMU (300330) Maruia West Bank is immediately south of these areas. The area borders a significant length of Maruia River, a tributary of Buller River, and includes multiple side streams that have not been logged or historically cleared so have high representative values for freshwater.

### Diversity and pattern

The area is almost totally clothed in beech forest on hillslopes, with small areas of alluvial flat and localised areas of wetland. The hillslopes vary from gentle to steep, have a range of aspects, and extend from valley floor to ridge crest. The area contains numerous valleys and gullies draining the west side of the Victoria Range. The area contains 11 level 4 land environments, which indicates high ecological diversity.

There are no records of native freshwater fish within the boundaries of this assessment area, but there are records of longfin eel (*Anguilla dieffenbachii*), upland bully (West Coast) (*Gobiomorphus breviceps*) and dwarf galaxias (*Galaxias divergens*) in Maruia River further upstream, so it is likely they use the watercourses traversing these areas as well.

### Rarity and distinctiveness

There are records of yellow mistletoe (*Alepis flavida*), scarlet mistletoe (pirita, *Peraxilla colensoi*) and red mistletoe (pikirangi, *Peraxilla tetrapetala*) (all At Risk: Declining) in nearby forest areas. There are nearby records for three other threatened plant species: *Brachyglottis traversii* (Naturally Uncommon), the shrub *Melicytus flexuosus* (Nationally Vulnerable) and *Coprosma wallii* (At Risk: Declining), which could also be here. Longfin eel and dwarf galaxias (both At Risk: Declining) are recorded farther upstream, and are also likely here.

Whio (Blue Duck, *Hymenolaimus malacorhynchus*) (Nationally Vulnerable) have been recorded near Scottys Creek, kākā (*Nestor meridionalis*) (At Risk: Recovering) are known throughout this section of Maruia, and it is highly likely to also harbour threatened long-tailed bat (*Chalinolobus tuberculatus*) (Nationally Critical).

### Ecological context

The two areas that make up this assessment area adjoin Victoria Forest Park to the west and southeast, and there are two ecological area overlays to the west – Central Maruia and Maruia West Bank. Immediately adjoining to the east is Shenandoah River Conservation Area (INA\_45), forming an extensive forest area.

## Recreation Values

### Setting

These areas are in a Backcountry-remote zone, adjacent to Victoria Forest Park. They are largely free of tracks or facilities, but an access track to the 6-bunk Wheel Creek Hut is at the southern end of the area at Wheel Creek.

### Visitor type and activities typically undertaken

High use for rafting, kayaking, and fishing at the southern end. Otherwise, occasional hunting and tramping.

### Access

Relatively isolated, with some access via West Bank Maruia Rd, Flat Creek Rd and Wheel Creek tramping route.

## Heritage Values

### Historical overview

The Maruia valley has played an important part in New Zealand's conservation history, being the inspiration for the Maruia Declaration. The declaration, circulated as a petition and radical at the time, demanded legal recognition of native forests and an end to their logging. In 1977, the Declaration was submitted to government, and almost all its demands were met over the following 30 years. There is an old historic coal mine in the northern section, and this is likely the reason for the legal road going into this section of forest. Further south within the area is Flat Creek mine which operated approximately between 1954 and 1968.

### Heritage values and Sites recorded

None recorded.

## Permissions Summary

Grazing licence for grazing adjacent to Maruia River (27.8 ha).

## Map (aerial photo)

