

INA_26 – Mawheraiti Farm (189.1379 ha)

Protected Area(s)	Area (ha)	NaPALIS #	# of Primary Parcels
Conservation Area - Mawheraiti Farm	189.1379	2806814	2

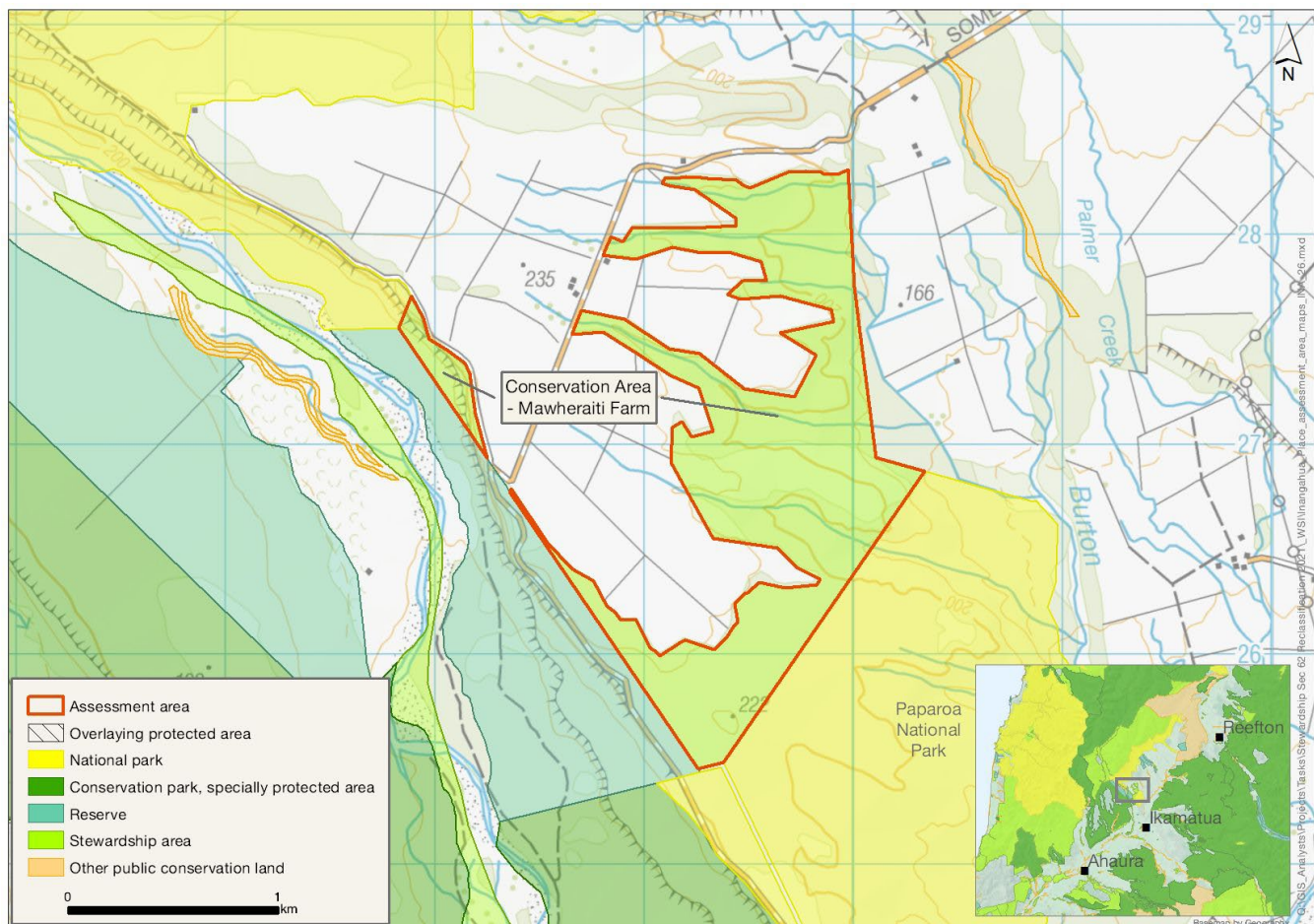
Location

On the western side of the Grey valley at the foot of the eastern Paparoa Ranges, north of Ikamatua and south-west of Reefton.

Brief Description

Beech/podocarp forest on outwash with shrubland and wetland species, next to an area of Paparoa National Park and Mirfin Scenic Reserve, accessible from Sommerville Road and Mawheraiti. Good coverage of podocarp/beech forest, which is now rare on the Maimai Plains. It is part of an important wildlife corridor. No permissions, tracks or facilities or recreation. No historical interest.

Map



Ngāi Tahu Values and Interests

Mo tātou, a, mo ka uri, a muri ake nei – for us and our children after us

From the preliminary desk top assessments, there do not appear to be any site specific Ngāi Tahu values identified. However, there is a deep connection between Ngāi Tahu and all of the whenua in the Ngāi Tahu takiwā, and the absence of site-specific values in the preliminary analysis does not detract from that connection, nor does it confirm that site specific values are not present. Further, a section 4 Conservation Act and Te Tiriti principles perspective is required as well, and it may be that areas of land are significant to Ngāi Tahu from that broader perspective. To avoid doubt, nothing in the proposed classification affects, limits or derogates from the rangatiratanga of Ngāi Tahu over its takiwā, including in relation to freshwater; and/or any other rights or interests Ngāi Tahu may have.

Ecological Values

Representativeness

High level of representativeness for the Maimai Ecological District. There is a glacial outwash terrace with good coverage of indigenous forest – beech (tawhai, *Fuscopora* and *Lophozonia*)/podocarp (*Podocarpaceae* and *Phyllocladaceae*) – shrubland and wetland species. Note: Podocarp/beech forest is now rare on the Maimai Plains. This is a vegetated area with small waterways and moderate-high level of predicted naturalness. However, the waterways do flow through developed farmland, and only a section of the waterway is covered by this area.

Diversity and pattern

There is a high level of diversity and pattern, with continuous indigenous cover over the areas being assessed; the Otututu/Rough River, Mirfin Scenic Reserve and the Otututu Ecological Area.

There are no species recorded here, but nearby in similar systems are longfin eel (*Anguilla dieffenbachii*), torrentfish (piripiripōhātu, *Cheimarrichthys fosteri*), dwarf galaxias (*Galaxias divergens*), upland bully (West Coast) (*Gobiomorphus breviceps*), redfin bully (*Gobiomorphus huttoni*) and brown trout (*Salmo Trutta*) (Introduced).

Rarity and distinctiveness

Within 1 km is Otututu Ecological Area, which has a 1.1 EMU (Ecological Management Unit) prescription which has not started but identifies great spotted kiwi (roroa, *Apteryx maxima*) (Nationally Vulnerable) and South Island kākā (*Nestor meridionalis*) (At Risk: Recovering) as key species. The continuous forest cover from the ecological area into the neighbouring scenic reserve and into the two areas being assessed, provides greater habitat for these species and others. It is part of an important wildlife corridor. There are no rare or threatened species recorded in these two areas. Level 4 land environments O1.4a decrease in indigenous vegetation cover (1997–2002), no threat classification and M2.1a decrease in indigenous vegetation cover (1997–2002), classified as at-risk.

Ecological context

This area consists of two areas making up 189 ha on the Maimai Plains, part of the Maimai Ecological District. Both areas are covered in indigenous forest, with the larger of the two fragmented with many fingers of vegetation reaching out into farmland or former plantation forestry land. It looks like there is a laneway and

grazed land in one of the fingers, plus a parking area and formed driveway for a house. The smaller area is part of the terrace/bank above Otututu/Rough River. There is a large wetland present in the larger area. Adjacent to

Recreation Values

Setting

This area is in a Backcountry-remote zone. There are no tracks or facilities in the area.

Visitor type and activities typically undertaken

Likely to receive little recreation use.

Access

Access via Mirfins Road and Sommerville Road.

Heritage Values

No historic sites or heritage values recorded.

Permissions Summary

None recorded.

Map (aerial photo)

