

MAW_42 – Arnolds River (29.5888 ha)

Protected Area(s)	Area (ha)	NaPALIS #	# of Primary Parcels
Conservation Area – Arnolds River	29.5888	2806535	1

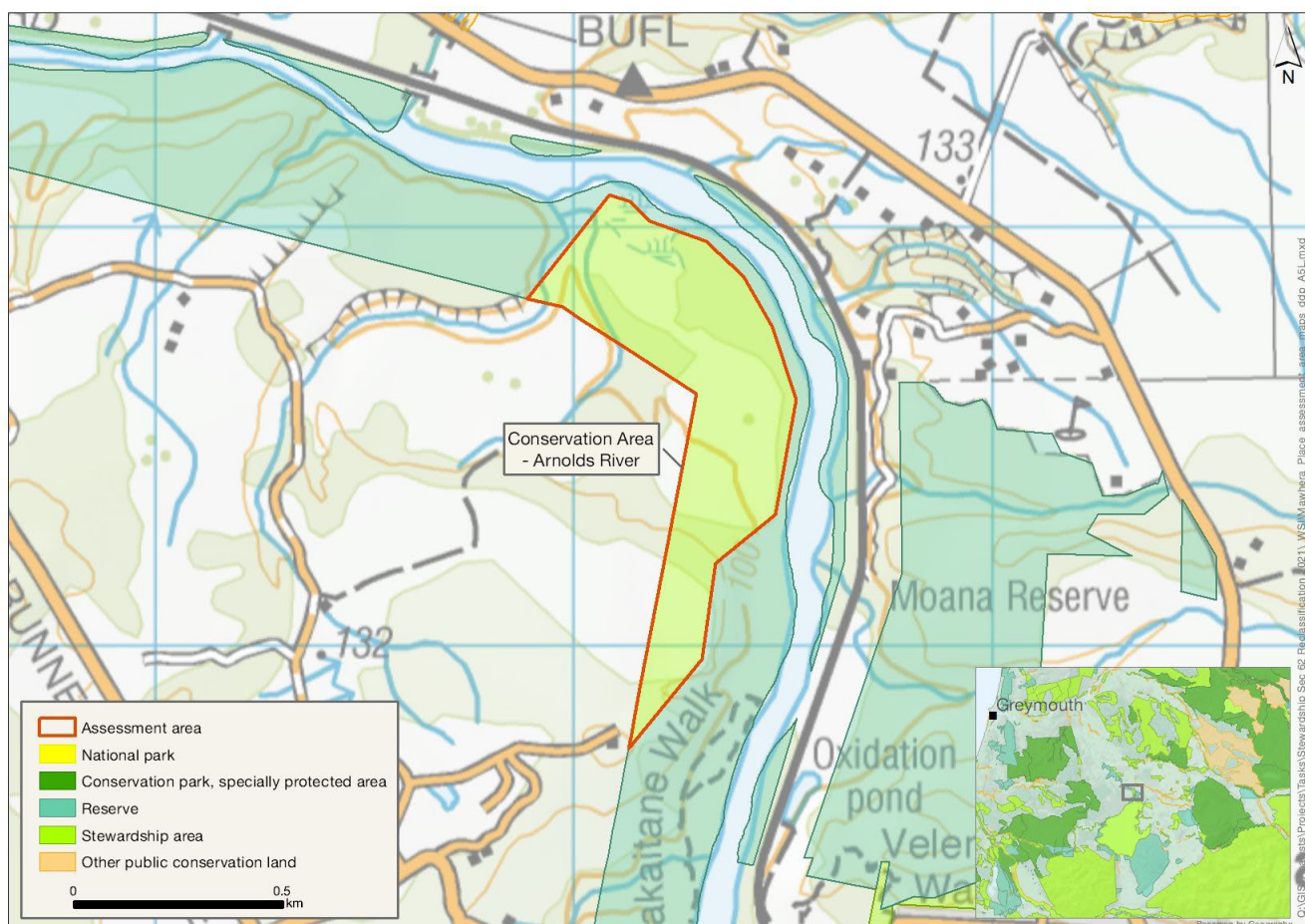
Location

On the true left/western side of the Arnold River downstream/north of Lake Brunner.

Brief Description

An area of regenerating cutover forest, secondary scrub and large open patches of grassland and pākihi between two sections of the Arnold River Scenic Reserve. Approximately half of it appears to have been cleared in the past. It is difficult to access – possible on foot (or boat) via Scenic Reserve but without any tracks or facilities. There is an extraction concession for harvesting sphagnum moss on Arnold River. No historical interest.

Map



Ngāi Tahu Values and Interests

Mo tātou, a, mo ka uri, a muri ake nei – for us and our children after us

There is a deep connection between Ngāi Tahu and all of the whenua in the Ngāi Tahu takiwā. A section 4 Conservation Act and Te Tiriti principles perspective is required, and it may be that areas of land are significant to Ngāi Tahu from that broader perspective. To avoid doubt, nothing in the proposed classification affects, limits or derogates from the rangatiratanga of Ngāi Tahu over its takiwā, including in relation to freshwater; and/or any other rights or interests Ngāi Tahu may have.

This conservation area is in close proximity to the Statutory Acknowledgement/Deed of Recognition – Kotuku Whakaoho (Lake Brunner / Moana), which is significant to Poutini Ngāi Tahu and Ngāi Tahu.

Ecological Values

Representativeness

A stretch of regenerating cutover forest, secondary scrub and cleared areas of grassland and pākihi above the true left bank of Arnold River, representative of secondary forest in the ecological district. Small sections of swamp and pākihi wetland type indicate that this parcel is of hydrological importance. There is high predicted water quality in the stream that crosses the northern part of the conservation area.

Diversity and pattern

This parcel contains some forest, wetlands, and riparian vegetation, but about half of it appears to have been cleared in the past. A reasonable level of conservation value is predicted, with records of longfin eel (*Anguilla dieffenbachii*), kōaro (*Galaxias brevipinnis*), giant kōkopu (*Galaxias argenteus*), common bully (*Gobiomorphus cotidianus*), kōura (freshwater crayfish, *Paranephrops planifrons*), shortfin eel (*Anguilla australis*), kākahi (freshwater mussel, *Hyridella menziesi*) and common smelt (*Retropinna retropinna*). The Arnold River Dam would prevent fish passage between this parcel and the mouth of Grey River/Māwheranui, reducing any significance for migratory species unless there are fish ladders or some other way of getting past the obstruction.

Rarity and distinctiveness

There are no terrestrial threatened species recorded from the site, and it is not a threatened habitat. The parcel exhibits high levels of conservation concern for freshwater, with longfin eel, kōaro and giant kōkopu (all At Risk: Declining).

Ecological context

This parcel links to the Arnold River Scenic Reserve at both ends, and together they cover about 4 km of the true left of Arnold River.

Recreation Values

Setting

This area is on the true left of Arnold River below the outlet of Lake Brunner at Moana, and is in a Backcountry-remote zone and adjacent to the Arnold River Scenic Reserve. There are no tracks or facilities located in the area.

Visitor type and activities typically undertaken

Occasional hunting.

Access

Difficult to access due to the boundary through freehold, otherwise possible on foot (or boat) via Scenic Reserve.

Heritage Values

Historical overview, Sites recorded and Heritage values

None recorded.

Permissions summary

An extraction concession for harvesting sphagnum moss on Arnold River.

Map (aerial photo)

