

INA_50 – Maruia River valley floor (31.6223 ha)

Protected Area(s)	Area (ha)	NaPALIS #	# of Primary Parcels
Conservation Area - Maruia River	31.6223	2807882	5

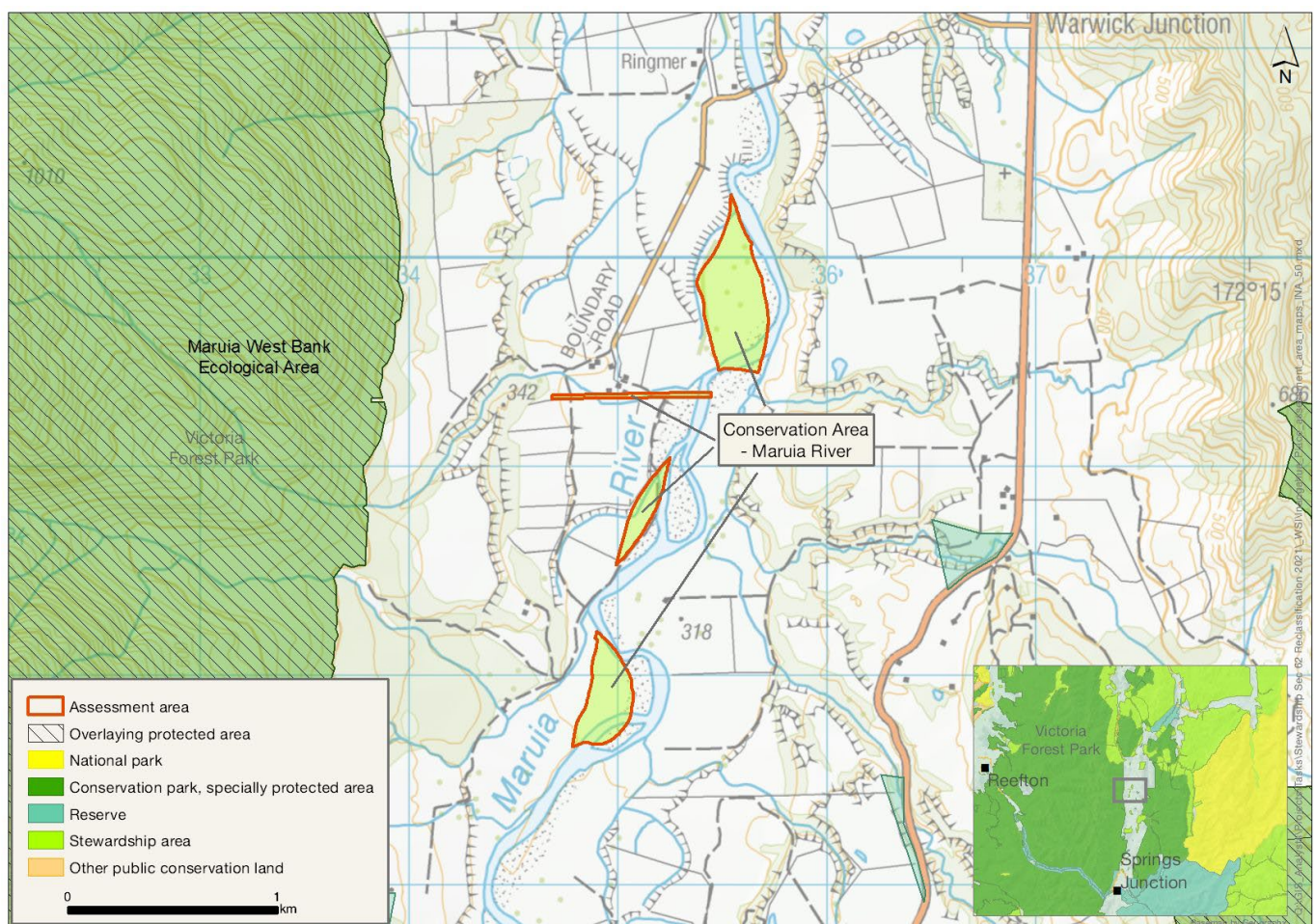
Location

Four areas of alluvial flat on the true left (west) side of Maruia River, north of Maruia.

Brief Description

Four conservation areas (CA) of actively farmed alluvial flats, old riverbed and active channel associated with Maruia River. These are highly developed areas of grazed land, surrounded by freehold properties. While currently used for pastoral farming, the flats could provide a protective riparian buffer for the river. A grazing concession is in place. There is no easy access, or tracks or facilities, and little expected recreational use.

Map



Ngāi Tahu Values and Interests

Mo tātou, a, mo ka uri, a muri ake nei – for us and our children after us

From the preliminary desk top assessments, there do not appear to be any site specific Ngāi Tahu values identified. However, there is a deep connection between Ngāi Tahu and all of the whenua in the Ngāi Tahu takiwā, and the absence of site-specific values in the preliminary analysis does not detract from that connection, nor does it confirm that site specific values are not present. Further, a section 4 Conservation Act and Te Tiriti principles perspective is required as well, and it may be that areas of land are significant to Ngāi Tahu from that broader perspective. To avoid doubt, nothing in the proposed classification affects, limits or derogates from the rangatiratanga of Ngāi Tahu over its takiwā, including in relation to freshwater; and/or any other rights or interests Ngāi Tahu may have.

Ecological Values

Representativeness

The area is farmed montane alluvial flats along Maruia River. It is largely pasture farmed under a grazing concession. There are also areas of riparian willow treeland. The area spans the boundary of the Reefton and Rotorua ecological districts. There are no ecological or species management units present.

These areas cover old riverbeds, as well as reaches of active channel, and the southernmost area is entirely within a single level 4 land environment – braided riverbed. Water quality is predicted to be high, however the nature of the vegetation on these areas (pastoral farmland) means the level of naturalness is compromised.

Diversity and pattern

Although there are no freshwater fish or invertebrate records within the waterway reaches here, there are records of dwarf galaxias (*Galaxias divergens*), longfin eel (*Anguilla dieffenbachii*), upland bully (West Coast) (*Gobiomorphus breviceps*) and brown trout (*Salmo Trutta*) (Introduced) in the main stem approximately 5 km south. These highly mobile species are likely to use the reaches in this area.

Rarity and distinctiveness

The area is an alluvial flat being entirely an M2.2a land environment, which has an At Risk status.

These four areas are one conservation area covering sections of Maruia River and floodplain, and are likely to support diverse freshwater fauna communities. There are records of dwarf galaxias and longfin eel (both At Risk: Declining), approximately 5 km upstream. These highly mobile species are likely to use the area.

Ecological context

These alluvial flats along Maruia River are currently used for pastoral farming, but could provide a protective riparian buffer for the river.

Recreation Values

Setting

These are in a backcountry-remote zone. There are no tracks or facilities.

Visitor type and activities typically undertaken

The area is likely to receive little recreation use.

Access

No easy access to these areas. Surrounded by freehold properties.

Heritage Values

Historical overview

Sites recorded

L30/90 Woolshed and yards noted on historic survey map SO 9351, dating from 1944. Likely dates from around 1905 when the first Crown lease on the land was granted.

Heritage values

None recorded.

Permissions Summary

Grazing concession for grazing Maruia Valley including dairy.

Map (aerial photo)

