

MAW_48 – Kangaroo Lake (128.0365 ha)

Protected Area(s)	Area (ha)	NaPALIS #	# of Primary Parcels
Conservation Area - Kangaroo Lake	128.0365	2806547	1

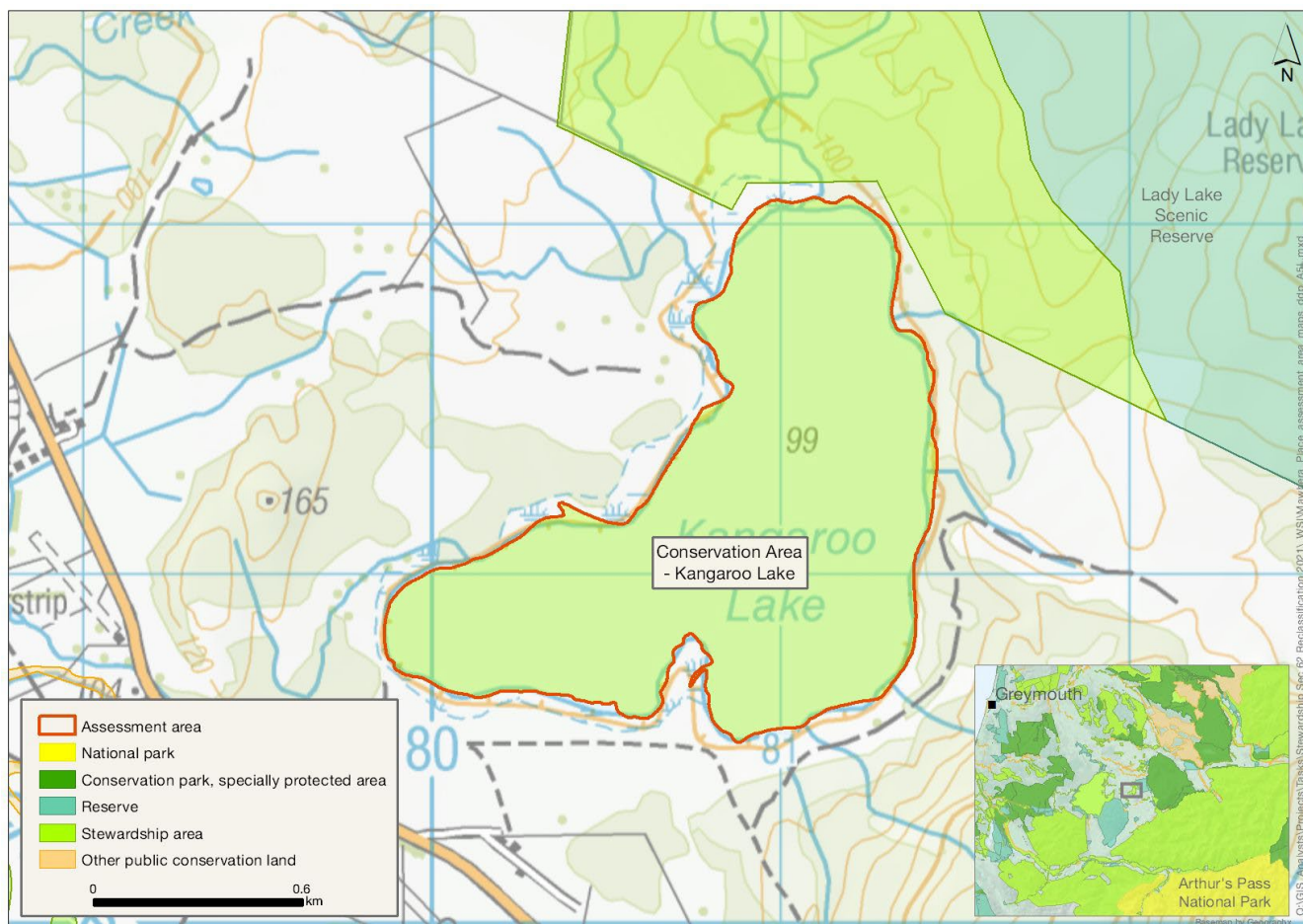
Location

Kangaroo Lake, east of Lake Brunner/Moana Kōtuku-Whakaoho and south of MAW_47 Bell Hill Lady Lake.

Brief Description

Kangaroo Lake is part of a network of fluvio-glacial lakes and is included in the Directory of New Zealand wetlands. The assessment area covers the lake along with its swampy margin. Mostly outside the conservation area is a wide wetland margin of very high value, including importance to waterfowl. It is relatively difficult to access. Only non-motorised boats are allowed on Kangaroo Lake. There is no historical interest A concession is held for commercial eeling for shortfin eels in Kangaroo Lake.

Map



Ngāi Tahu Values and Interests

Mo tātou, a, mo ka uri, a muri ake nei – for us and our children after us

From the preliminary desk top assessments, there do not appear to be any site specific Ngāi Tahu values identified. However, there is a deep connection between Ngāi Tahu and all of the whenua in the Ngāi Tahu takiwā, and the absence of site specific values in the preliminary analysis does not detract from that connection, nor does it confirm that site specific values are not present. Further, a section 4 Conservation Act and Te Tiriti principles perspective is required as well, and it may be that areas of land are significant to Ngāi Tahu from that broader perspective. To avoid doubt, nothing in the proposed classification affects, limits or derogates from the rangatiratanga of Ngāi Tahu over its takiwā, including in relation to freshwater; and/or any other rights or interests Ngāi Tahu may have.

Ecological Values

Representativeness

Kangaroo Lake is part of a network of fluvio-glacial lakes (including other parcels like Lake Brunner/Moana Kōtuku-Whakaoho and Lake Ahaura). It is representative of this type of lake and is included in the Directory of New Zealand wetlands.

Diversity and pattern

This parcel appears to comprise only the lake and some patches of narrow lake margin. Mostly outside the parcel is a wide wetland margin of very high value. It is swamp vegetation comprised of raupō (bullrush, *Typha orientalis*), kuta (*Eleocharis sphacelate*) and other sedges as well as flax and shrubland species that support good feeding and breeding habitat for a variety of wetland birds. The lake is important for waterfowl, including Australasian bittern (matuku hūrepo, *Botaurus poiciloptilus*, fernbird (mātātā, *Bowdleria punctata*), shags, herons, grey duck (pārera, *Anas superciliosa*), NZ shoveler (kuruwhengi, *Anas rhynchos*) and NZ scaup (black teal, *Aythya novaeseelandiae*), many of which will also use the lake. There is a landlocked eel population.

Rarity and distinctiveness

There are records for bittern and stout native milefoil (*Myriophyllum robustum*) (At Risk: Declining) from Kangaroo Lake.

Ecological context

Large tracts of the surrounding area appear to be natural wetlands that are on legal road and a neighbouring property. MAW_47 is adjacent to the north but is separated by a 50 m strip of legal road. High value margins are associated with the road reserve.

Recreation Values

Setting

This area is Kangaroo Lake, in a Backcountry-remote zone. There are no tracks or facilities. An adjoining landowner is happy for kayakers to utilise the lake but doesn't like powered vehicles – only non-motorised boats are allowed on the lake.

Visitor type and activities typically undertaken

Likely to receive low levels of recreation use. May get occasional visits by canoe and anglers.

Access

Relatively difficult to access. May be possible to park on Lake Brunner Road and paddle up a side creek to the lake or get access via adjoining freehold land.

Heritage Values

Historical overview and Sites recorded

None recorded.

Heritage values

No value statement possible

Permissions summary

A concession for commercial eeling for shortfin eels in Kangaroo Lake as well as Lake Brunner.

Map (aerial photo)

