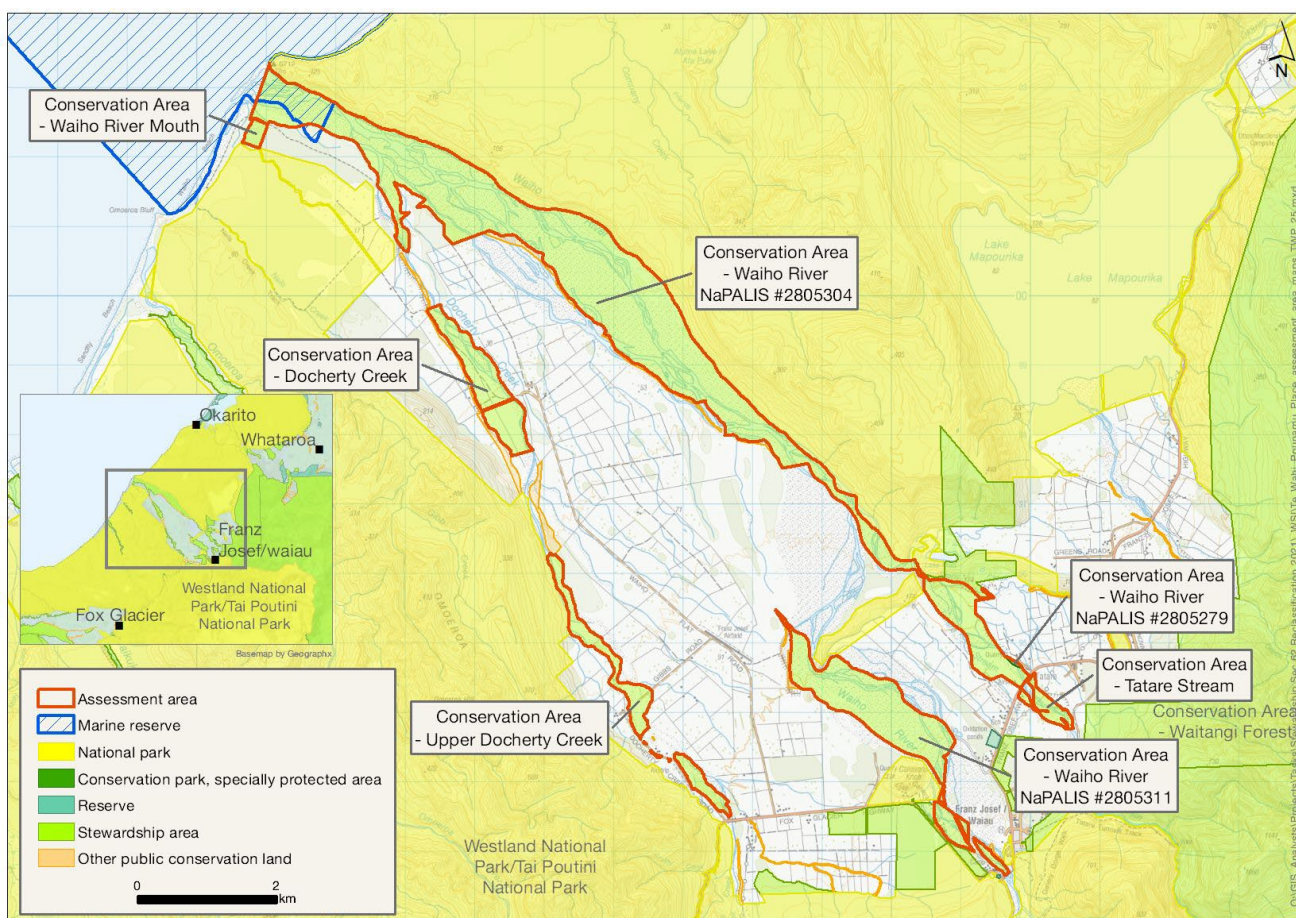


Stewardship Land Review: Recommendation

TWP_25 – Docherty Creek, Waiho River, Tatare Stream

Departmental Region	Management Place	Technical report	Assessment #	Held Under
Western South Island	Te Wāhi Pounamu	DOC-6913460	TWP_25	s62

Docherty Creek, Waiho River, Tatare Stream



Protected Areas	Area (ha)	NaPALIS #	# of Primary Parcels
Conservation Area - Docherty Creek	87.8751	2805277	2
Conservation Area - Upper Docherty Creek	72.6313	2805278	5
Conservation Area - Waiho River	1.1263	2805279	1
Conservation Area - Waiho River	804.3227	2805304	3
Conservation Area - Waiho River Mouth	9.0696	2805306	1
Conservation Area - Waiho River	192.9419	2805311	4
Conservation Area - Tatare Stream	19.9401	2805313	2

Recommendation on Reclassification

Western South Island National Panel Recommendation

The Western South Island National Panel recommends:

- The Conservation Areas ‘Docherty Creek’ (NaPALIS #2805277), ‘Upper Docherty Creek’ (NaPALIS #2805278), ‘Waiho River’ (NaPALIS #2805279) and ‘Waiho River Mouth’ (NaPALIS #2805306) are declared to be held for conservation purposes, pursuant to section 7(1) of the Conservation Act 1987, are classified pursuant to section 18(1) of the Conservation Act 1987 as a section 19 Conservation Park, and are named the ‘Waiiau Conservation Park’.
- The Conservation Areas ‘Waiho River’ (NaPALIS #2805304 & #2805311) are declared to be held for conservation purposes, pursuant to section 7(1) of the Conservation Act 1987, are classified pursuant to section 18(1) of the Conservation Act 1987 as a section 19 Conservation Park, and are named the ‘Waiiau Awa Conservation Park’.
- The Conservation Area ‘Tatare Stream’ (NaPALIS #2805313) is declared to be held for conservation purposes, pursuant to section 7(1) of the Conservation Act 1987, is classified pursuant to section 18(1) of the Conservation Act 1987 as a section 19 Conservation Park, and is named the ‘Tatare Conservation Park’.

Mana Whenua Panel Recommendation

The Mana Whenua Panel does not seek to make its own recommendation for Conservation Areas ‘Docherty Creek’ (NaPALIS #2805277), ‘Upper Docherty Creek’ (NaPALIS #2805278), ‘Waiho River’ (NaPALIS #2805279, #2805304 & #2805311), ‘Waiho River Mouth’ (NaPALIS #2805306) and ‘Tatare Stream’ (NaPALIS #2805313), and does not either support or oppose the Western South Island National Panel’s recommendation.

Western South Island National Panel Justification for Recommendation – Executive Summary

The assessment area contains predominantly alluvial flats and active riverbed, including localised forest patches, extensive shrublands, marsh and pākihi wetlands, and areas of pasture. The braided riverbed within the area is noted as a naturally rare ecosystem and dynamic landform, with a range of different aged surfaces and different successional stages. A range of shore and riverbed bird species utilise the braided riverbed habitat present, including several threatened and at-risk species such as the banded dotterel (Nationally Vulnerable). Recreation values are present associated with hunting, rafting on Waiho River, commercial quad bike tours on the bed of the Waiho River and horse riding in Docherty Creek. The area contains heritage values associated with historic South Westland transport routes, including a historic ferry crossing at the Waiho River mouth which formed part of the South Westland 'beach highway'. The classification as conservation park is considered to reflect the mosaic of values present, protecting natural and historic resources while facilitating public recreation and enjoyment of the area.

Mana Whenua Panel Justification for Recommendation

The Mana Whenua Panel has been provided with the opportunity to review the Western South Island National Panel's reclassification recommendation for Conservation Areas 'Docherty Creek' (NaPALIS #2805277), 'Upper Docherty Creek' (NaPALIS #2805278), Waiho River' (NaPALIS #2805279, #2805304 & #2805311), 'Waiho River Mouth' (NaPALIS #2805306) and 'Tatare Stream' (NaPALIS #2805313), and does not either support or oppose the Western South Island National Panel's recommendation.

Notwithstanding this, the Mana Whenua Panel expressly reserves the right of Ngāi Tahu to seek to have the classification of this area reviewed in the future. There is a deep connection between Ngāi Tahu and all of the whenua in the Ngāi Tahu takiwā. The interests of Ngāi Tahu in this area may change over time which may require the classification to be revisited. In addition, more appropriate forms of protected area classifications from a Ngāi Tahu perspective may be developed through conservation law reform.

Western South Island National Panel Justification for Recommendation

1. *Treaty of Waitangi/Te Tiriti o Waitangi Obligations*

The Western South Island National Panel is required to give effect to the principles of The Treaty of Waitangi/Te Tiriti o Waitangi, in accordance with section (4) of the Conservation Act 1987.

The panel acknowledges that the assessment area is within the Ngāi Tahu takiwā and the rohe of Poutini Ngāi Tahu, and as such appreciates the connection between Ngāi Tahu and the whenua. In making the above recommendation the panel has considered the values and interests of Ngāi Tahu as presented to them. This information has been considered in conjunction with the content provided in the corresponding technical reports. The above recommendation is considered to be consistent with the identified Ngāi Tahu values and interests.

2. *Treaty Settlement Obligations*

No Treaty/Tiriti settlement obligations are identified in the West Coast Te Tai o Poutini Conservation Management Strategy (CMS) that specifically relate to this assessment area.

3. *Consideration of Adjoining Land Classification*

The panel is required to consider the classification(s) of adjacent and nearby public conservation land, enabling a 'landscape' approach to the reclassification work to be implemented.

The assessment area borders Tai Poutini National Park, several marginal strips (Docherty, Neils Creeks, Canavans Knob, and Waiho River) and is part of Te Wāhipounamu – South West New Zealand World Heritage Area.

4. *Conservation Justifications*

The panel recommendation is required to include clear conservation justifications. These conservation justifications are addressed in sections 4 (a), (b), (c) and (d), based on information identified in the corresponding technical reports.

a. *Identified Landscape Values*

This assessment area combines several braided riverbeds and alluvial flats in the Franz Joseph area and includes islands, active channels, bare gravels, banks, backwaters and unmodified terraces and natural vegetation patterns. The area contributes to high natural landscape character and connects Westland Tai Poutini National Park, across lowlands and alluvial flats, to the sea. The lower braided river and river mouth of the Waiho are included in Outstanding Natural Landscape ONL 15 Koihahai/Gillespies Point to Te Kohumarua Bluff.

b. Identified Ecological Values

The assessment area contains predominantly alluvial flats and active riverbed, including localised forest patches, extensive shrublands, marsh and pākihi wetlands, and areas of pasture. The braided riverbed within the area is noted as a naturally rare ecosystem and dynamic landform, with a range of different aged surfaces and different successional stages. Although the assessment area traverses modified floodplains, a high level of naturalness is noted. A range of shore and riverbed bird species utilise the braided riverbed habitat present, including several threatened and at-risk species such as the banded dotterel (Nationally Vulnerable). The area also likely supports common and rare freshwater species. The classification of conservation park is considered to reflect the identified ecological values, being managed to ensure the longterm protection and maintenance of biological diversity.

c. Identified Recreation Values

The assessment area contains recreation values associated with a range of activities including hunting, rafting on Waiho River, commercial quad bike tours on the bed of Waiho River and horse riding in Docherty Creek. The above classification is considered to provide for these recreational values, being managed to facilitate public recreation and enjoyment as a secondary objective.

d. Identified Heritage Values

The assessment area contains heritage values relating to historic South Westland transport routes. The Waiho River Mouth conservation area contained a historic ferry crossing which formed part of the South Westland 'beach highway'. The above recommendation is considered to accommodate these heritage values, being managed so that historic resources are protected as a primary objective.

5. Current Land Use

The assessment area contains concessions for wild animal control, gravel extraction from Waiho River and Docherty Creek, and grazing at Docherty Creek and Tatara Stream.

6. Consideration of the Climate Change Commission Report

The panel gave consideration to the objectives of the [Climate Change Commission report](#) and the recommended policy direction. The key focus of the advice is ensuring a shift to a low carbon and resilient Aotearoa. The panel does not consider the recommended land classification to limit future decision making over the land to mitigate emissions, adapt to climate change and sequester carbon.

7. Strategic Policy Direction

The assessment area is governed by the West Coast Te Tai o Poutini CMS. The CMS has been reviewed to identify all relevant provisions and conservation area-specific treaty settlement

obligations when formulating the above recommendation, and the recommended land classification is considered to be consistent with the aims of the strategy.

The above recommendation has also been considered in conjunction with the Conservation General Policy and conforms with policy 6(b) regarding reclassification and 6(c) & (d) regarding disposal.