

# TWP\_35 – Fox River (11.0542 ha)

Protected Area(s)	Area (ha)	NaPALIS #	# of Primary Parcels
Conservation Area – Fox River	11.0542	2805320	3

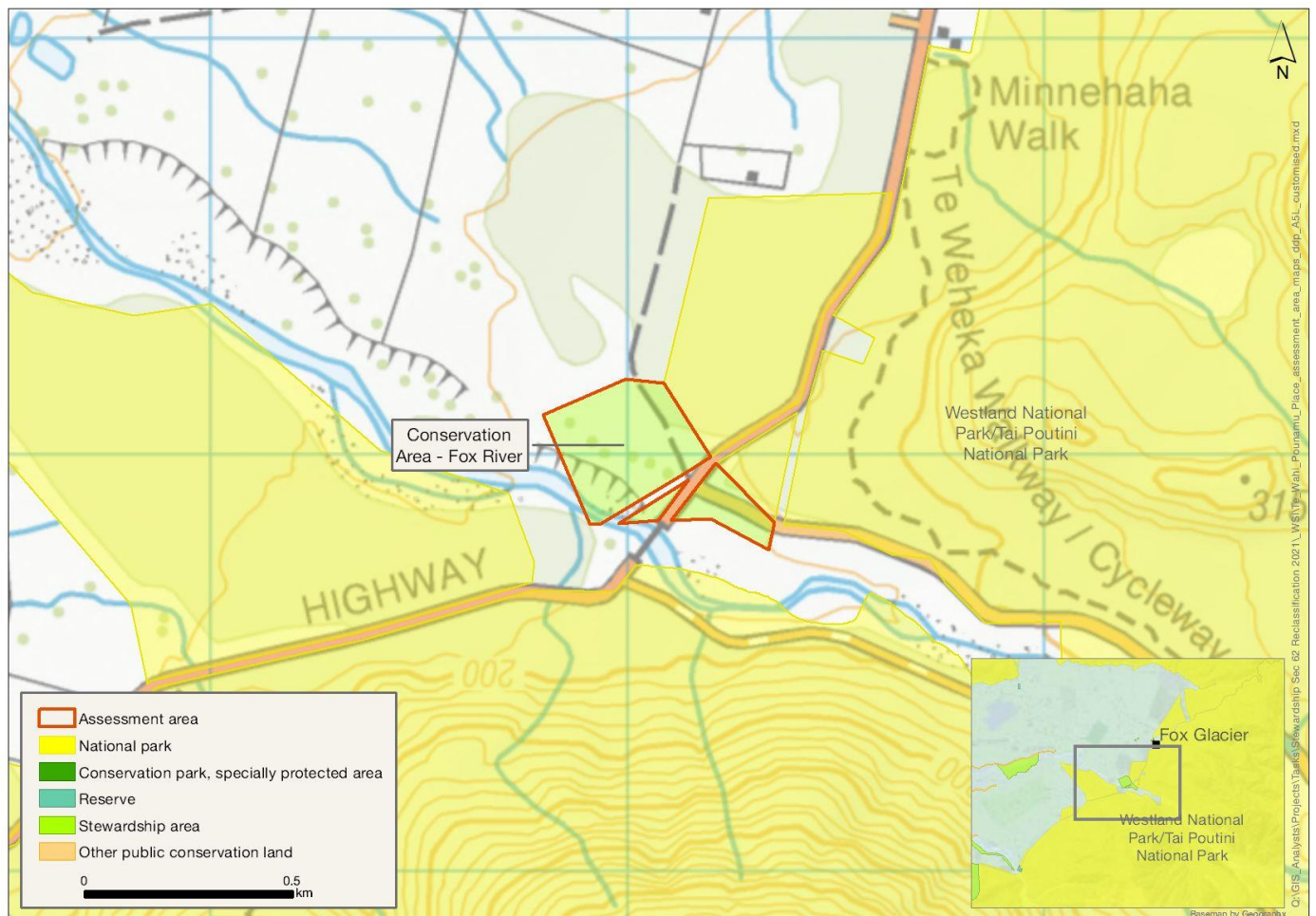
## Location

An area on the true right/north side of Fox River, adjacent to the Fox River bridge and 2 km south of Fox Glacier township.

## Brief Description

The area is on the alluvial flats of the Cook River/Weheka and includes forest, shrubland and riverbed either side of the state highway. Part of the area has been historically grazed, has been used as a green-waste disposal site and there has been a proposal for a heliport. There are no wetlands within 1 km. In the future, the DOC-managed Te Weheka Walkway/Cycleway could pass through the area. There are no permissions in place.

## Map



# Ngāi Tahu Values and Interests

*Mo tātou, a, mo ka uri, a muri ake nei – for us and our children after us*

From the preliminary desk top assessments, there do not appear to be any site specific Ngāi Tahu values identified. However, there is a deep connection between Ngāi Tahu and all of the whenua in the Ngāi Tahu takiwā, and the absence of site specific values in the preliminary analysis does not detract from that connection, nor does it confirm that site specific values are not present. Further, a section 4 Conservation Act and Te Tiriti principles perspective is required as well, and it may be that areas of land are significant to Ngāi Tahu from that broader perspective. To avoid doubt, nothing in the proposed classification affects, limits or derogates from the rangatiratanga of Ngāi Tahu over its takiwā, including in relation to freshwater; and/or any other rights or interests Ngāi Tahu may have.

## Ecological Values

### Representativeness

This small conservation area contains forest shrubland and riverbed, but, overall has limited representativeness of the Glaciers Ecological District. It contains mainly forest with shrublands and some grassy clearings. Haast Highway and the access road to Fox Glacier bisect the area.

The area contains a small portion of Fox River, a tributary of Cook River. The majority of this catchment is protected by Westland Tai Poutini National Park, with the remainder protected under TWP36 and TWP34, being the mainstem of the Cook River. Due to this level of protection, a high level of naturalness of freshwater amenities is predicted, and high water quality despite the high level of suspended sediment from glacial water. No wetlands are observed within close proximity (1 km radius).

### Diversity and pattern

The area contains river terraces and riverbed of the Cook River. It spans from forest into shrubland. It contains two land environments and is likely to support most common native forest birds.

Kōaro (*Galaxias brevipinnis*), banded kōkopu (*Galaxias fasciatus*) and longfin eel (*Anguilla dieffenbachii*) have been recorded here. No further freshwater fish records have been captured upstream, but the wider catchment is also home to redfin bully (*Gobiomorphus huttoni*), torrentfish (piripiripōhatu, *Cheimarrichthys fosteri*), bluegill bully (*Gobiomorphus hubbsi*) and shortfin eel (*Anguilla australis*).

### Rarity and distinctiveness

The area has *Coprosma wallii* and *Olearia lineata* (At Risk: Declining) and native prostrate broom *Carmichaelia juncea* (Nationally Vulnerable). Forest birds such as kea (*Nestor notabilis*) (Nationally Endangered), kārearea (New Zealand falcon, *Falco novaeseelandiae*) (Nationally Endangered), ruru (morepork, *Ninox novaeseelandiae*), tūī (*Prosthemadera novaeseelandiae*) and bellbird (korimako, *Anthornis melanura*) are likely present at times, as are kōaro and longfin eel (At Risk: Declining).

### Ecological context

The area is on the alluvial flats of the Cook River/Weheka. The area adjoins Westland Tai Poutini National Park. The area is included in Te Wāhipounamu – South West New Zealand World Heritage Area.

## **Recreation Values**

### **Setting**

This area is located at the entrance to the Fox Glacier Valley (north side). Part of the area is located on the western side of SH6. This area is in a Backcountry-remote zone. There was a historical proposal to relocate some of the Fox Glacier helipads to this area to reduce the impact of aircraft overflights over the township. This did not proceed. The access road to the Fox Glacier is closed and unlikely to reopen due to significant rockfall and flooding hazards. In the future, the DOC-managed Te Weheka Walkway/Cycleway could pass through the area on the eastern side of SH6 and allow people to connect from Fox Glacier to the walking and cycling track on the south side of the Fox Glacier Valley.

### **Visitor type and activities typically undertaken**

Walking and cycling.

### **Access**

Access from SH6 Fox Glacier.

## **Heritage Values**

### **Sites recorded**

None recorded.

### **Heritage values**

No value statement possible.

### **Modifying factors**

None recorded.

## **Permissions summary**

None recorded.

# Map (aerial photo)

