

INA_47 – Caves Road, Diamond Creek and Rappahannock River (1194.7947 ha)

Protected Area(s)	Area (ha)	NaPALIS #	# of Primary Parcels
Conservation Area - Caves Road	307.6157	2799320	2
Conservation Area - Diamond Creek	553.4861	2799321	3
Conservation Area - Rappahannock River	333.6929	2807878	2

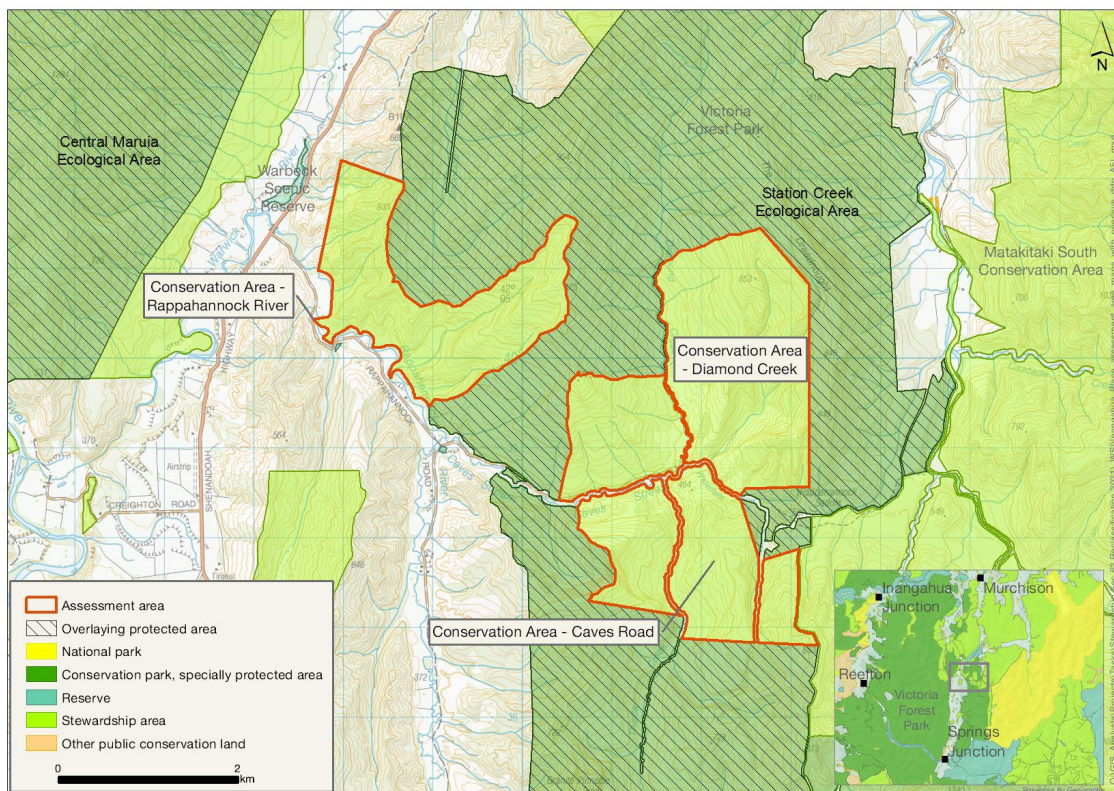
Location

Adjacent to Rappahannock and Caves roads, between the Maruia and Glenroy valleys on the eastern side of Maruia valley.

Brief Description

These three moderately large conservation areas of forested hillslopes in the Rappahannock and Caves Stream catchments are surrounded by Victoria Forest Park and have high levels of naturalness. Scarlet mistletoe has been recorded here. There is access but no tracks or facilities – they are likely only used for occasional hunting. There are no permissions in place, or aspects of historic interest.

Map



Ngāi Tahu Values and Interests

Mo tātou, a, mo ka uri, a muri ake nei – for us and our children after us

From the preliminary desk top assessments, there do not appear to be any site specific Ngāi Tahu values identified. However, there is a deep connection between Ngāi Tahu and all of the whenua in the Ngāi Tahu takiwā, and the absence of site-specific values in the preliminary analysis does not detract from that connection, nor does it confirm that site specific values are not present. Further, a section 4 Conservation Act and Te Tiriti principles perspective is required as well, and it may be that areas of land are significant to Ngāi Tahu from that broader perspective. To avoid doubt, nothing in the proposed classification affects, limits or derogates from the rangatiratanga of Ngāi Tahu over its takiwā, including in relation to freshwater; and/or any other rights or interests Ngāi Tahu may have.

Ecological Values

Representativeness

A relatively large area (1195 ha) of predominantly beech (tawhai, *Fuscopora* and *Lophozonia*) forest on hillslopes extending from valley floor to ridge (340–940 m) within the Rotoroa Ecological District. Most of the area is unlogged, but there are some areas of regenerating forest. The Diamond Creek and Caves Road areas are cut by legal roads that generally follow the streams.

These areas include tributaries and riparian land of Rappahannock River, a tributary of Warwick River and, in turn, Maruia River, a part of the larger Buller catchment. All tributaries within these areas and further upstream can be described as having high levels of naturalness, with very little to no evidence of anthropogenic impacts. High water quality is predicted, with patches of marsh wetland habitat.

Diversity and pattern

The area contains gentle to steep slopes, facing a full range of aspects and two level 4 land environments.

Northern flathead galaxias (*Galaxias* species N), dwarf galaxias (*Galaxias divergens*), longfin eel (*Anguilla dieffenbachii*), kōura (freshwater crayfish, *Paranephrops planifrons*), freshwater shrimp (*Paratya*), upland bully (West Coast) (*Gobiomorphus breviceps*), bluegill bully (*Gobiomorphus hubbsi*), common bully (*Gobiomorphus cotidianus*) and kākahi (freshwater mussel, *Hyridella menziesi*) have all been recorded as present within the wider perimeter of the assessment area, although the main streams themselves are on legal road and not part of the assessment area.

Rarity and distinctiveness

The area contains several subcatchments. Scarlet mistletoe (pirita, *Peraxilla colensoi*) (At Risk: Declining) has been recorded here.

Ecological context

Except for the western boundary of the Rappahannock area, the area is surrounded by Victoria Forest Park, which in this section is overlain by Station Creek Ecological Area, together forming an extensive forest area. It includes the Caves Stream Ecological Management Unit (SMU no. 405998) and Te Maruia prescription area for goat control. The streams, although largely on legal road, are part of the Maruia Species Management Unit for dwarf galaxias.

Recreation Values

Setting

These three areas are in a Backcountry-remote zone with no tracks or facilities.

Visitor type and activities typically undertaken

Areas are likely to receive little recreation use, other than occasional hunting.

Access

Access via Rappahannock Road and Cave Stream access road.

Heritage Values

Historical overview

No historic sites or heritage values recorded.

Permissions Summary

None recorded.

Map (aerial photo)

