

# TWP\_04 – Duffers Creek Ianthe (287.4254 ha)

Protected Area(s)	Area (ha)	NaPALIS #	# of Primary Parcels
Conservation Area - Duffers Creek	287.4254	2809717	1

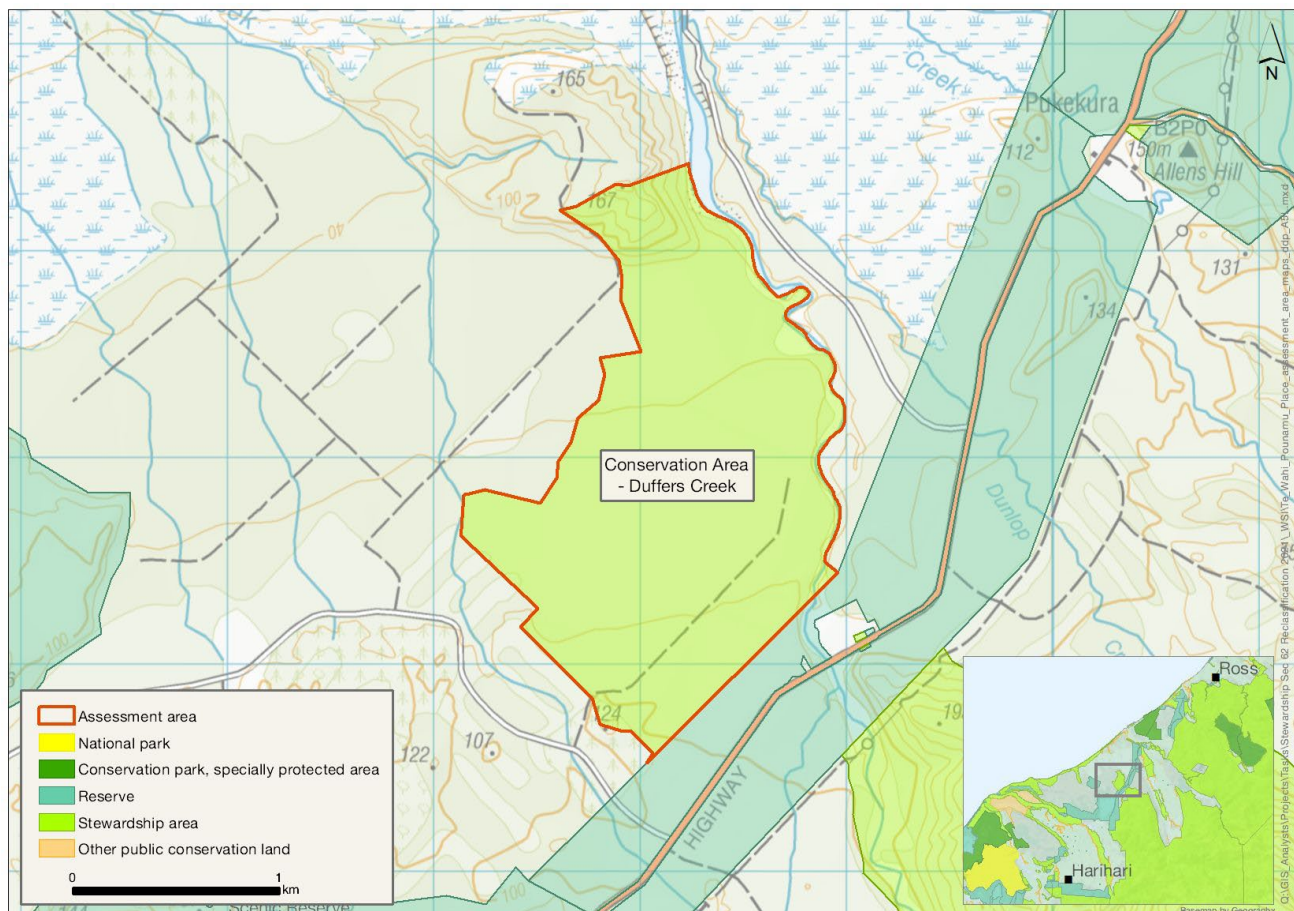
## Location

South of Duffers Creek and 1 km north of Lake Ianthe in Central Westland to the west of the Pukekura Scenic Reserve.

## Brief Description

Significant patch of indigenous podocarp forest that backs onto Pukekura Scenic Reserve - unlogged examples of tall podocarp forest like this are uncommon in the ecological district. Within a larger species management unit for brown mudfish. There is goldmining history and associated sites. There are no official tracks or facilities, and the area is predominantly used by hunters.

## Map



# Ngāi Tahu Values and Interests

*Mo tātou, a, mo ka uri, a muri ake nei – for us and our children after us*

There is a deep connection between Ngāi Tahu and all of the whenua in the Ngāi Tahu takiwā. A section 4 Conservation Act and Te Tiriti principles perspective is required. To avoid doubt, nothing in the proposed classification affects, limits or derogates from the rangatiratanga of Ngāi Tahu over its takiwā, including in relation to freshwater; and/or any other rights or interests Ngāi Tahu may have.

This conservation area is adjacent to Ngāi Tahu Forestry, an indication of Ngāi Tahu presence, interest and use of the land in this vicinity. Further assessment of the values and opportunities of this conservation area for Ngāi Tahu is required, as provided for by section 4 Conservation Act and Te Tiriti principles of informed decision making and active protection. Ngāi Tahu may have future aspirations for this land (such as forestry) and so those aspirations must be recognised, considered and provided for, when determining a suitable classification for this land.

## Ecological Values

### Representativeness

Podocarp (*Podocarpaceae* and *Phyllocladaceae*)/hardwood forest on mostly flat fluvio-glacial terrace with part hilly moraine which are features representative of the Harihari Ecological District. Likely to support a broad suite of native forest birds and invertebrates. Naturalness: likely high. There is some localised gorse (*Ulex europaeus*) and Himalayan honeysuckle (*Leycesteria formosa*) and signs of past logging associated with the two old logging roads now 4WD tracks. Known previously as the Duffers Block in the Ianthe Forest.

Duffers Creek is likely high naturalness for freshwater.

### Diversity and pattern

Some diversity and pattern in the distribution of two soil types and two landforms (terrace and moraine). Both common and rare forest birds are likely present, but no recent surveys have been undertaken. In the 1980s, kākā (*Nestor meridionalis*), kākārīki (yellow-crowned parakeet, *Cyanoramphus auriceps*), South Island robin (toutouwai, *Petroica australis australis*), kārearea (New Zealand falcon, *Falco novaeseelandiae*) and kererū (New Zealand pigeon, *Hemiphaga novaeseelandiae*) were recorded in the Ianthe and Saltwater Forests.

Freshwater fish present are common bully (*Gobiomorphus cotidianus*), kōura (freshwater crayfish, *Paranephrops planifrons*), redfin bully (*Gobiomorphus huttoni*), shortjaw kokopu (*Galaxias postvectis*), brown mudfish (*Neochanna apoda*), inanga (*Galaxias maculatus*), bluegill bully (*Gobiomorphus hubbsi*) and longfin eel (*Anguilla dieffenbachii*). Banded kokopu (*Galaxias fasciatus*), torrentfish (piripiripōhatu, *Cheimarrichthys fosteri*) and shortfin eel (*Anguilla australis*) also likely to be present.

### Rarity and distinctiveness

Mature podocarps are present, and unlogged examples of tall podocarp forest are uncommon in the ecological district. Kākā (At Risk: Recovering) and kākārīki (At Risk: Declining) have been noted from within Ianthe Forest (McEwan 1987). Forest gecko (*Mokopirirakau granulatus*) (At Risk: Declining) have been found within 2 km and are likely present in this habitat. The assessment area is within mapped kea habitat.

The freshwater fish present include shortjaw kōkopu (Nationally Vulnerable), and giant kōkopu, inanga, longfin eel, bluegill bully, torrentfish and kōaro (all At Risk: Declining). The area is within a large 1600 ha Ianthe Forest Species Management Unit for brown mudfish (At Risk: Declining).

## **Ecological context**

The assessment area is a reasonably regular polygon of 287 ha. It plays a significant role in connecting the indigenous forests of the hills to forests of the coast.

## **Recreation Values**

### **Setting**

This is a relatively large area in a Backcountry-remote zone on the eastern side of SH6. A 4WD road transects the area.

### **Visitor type and activities typically undertaken**

4WD and hunting.

### **Access**

Access off SH6. Locals use the unofficial “Greens Beach Road”, which DOC does not encourage.

## **Heritage Values**

### **Historical overview**

The area was goldrushed in 1866 but the ground was termed a 'duffer' (unprofitable). The creek and surrounding country were worked and prospected again between 1890 and the early 1900s by European and Chinese miners.

The 4.5 mile pack track was constructed in 1883 and was the only link with the sea beach between the Waitaha and Wanganui rivers.

### **Sites recorded**

- I34/11 Duffers Creek gold working
- I34/16 pack track
- I34/15 water race

### **Heritage values**

The historical values are associated with the gold rush of the 1860s and later goldmining endeavours.

### **Modifying factors**

The goldmining site is representative of nineteenth century mining operations. The current condition of the sites is unknown. At the time of the last site update in 1985 the gold-working site was in reasonably good condition as was the pack track where it passed through Pukekura Scenic Reserve. Its condition through the forestry areas was more mixed as a result of felling and machinery impacts.

## Permissions summary

None recorded.

## Map (aerial photo)

